

The background of the left side of the image is a photograph of the Austin skyline, featuring several tall skyscrapers. In the foreground, there is a concrete wall and a paved area. On the paved area, there are several concrete repair projects, including a large star-shaped patch with the word "AUSTIN" and a star in the center, and another patch with the word "BRAVADO" and "250 MILES".

Keep Concrete Weird

UNUSUAL PROJECTS



2025 SPRING CONVENTION

AUSTIN, TEXAS • APRIL 13 – 16, 2025

www.icri.org

RETURN OF THE HORSES

Mary Jablonski

Principal

Jablonski Building

Conservation, Inc.



RETURN OF THE HORSES

Conservation Challenges of Nivola's Play Horses



Mary Jablonski
Jablonski Building Conservation, Inc.

Public Art for Public Housing

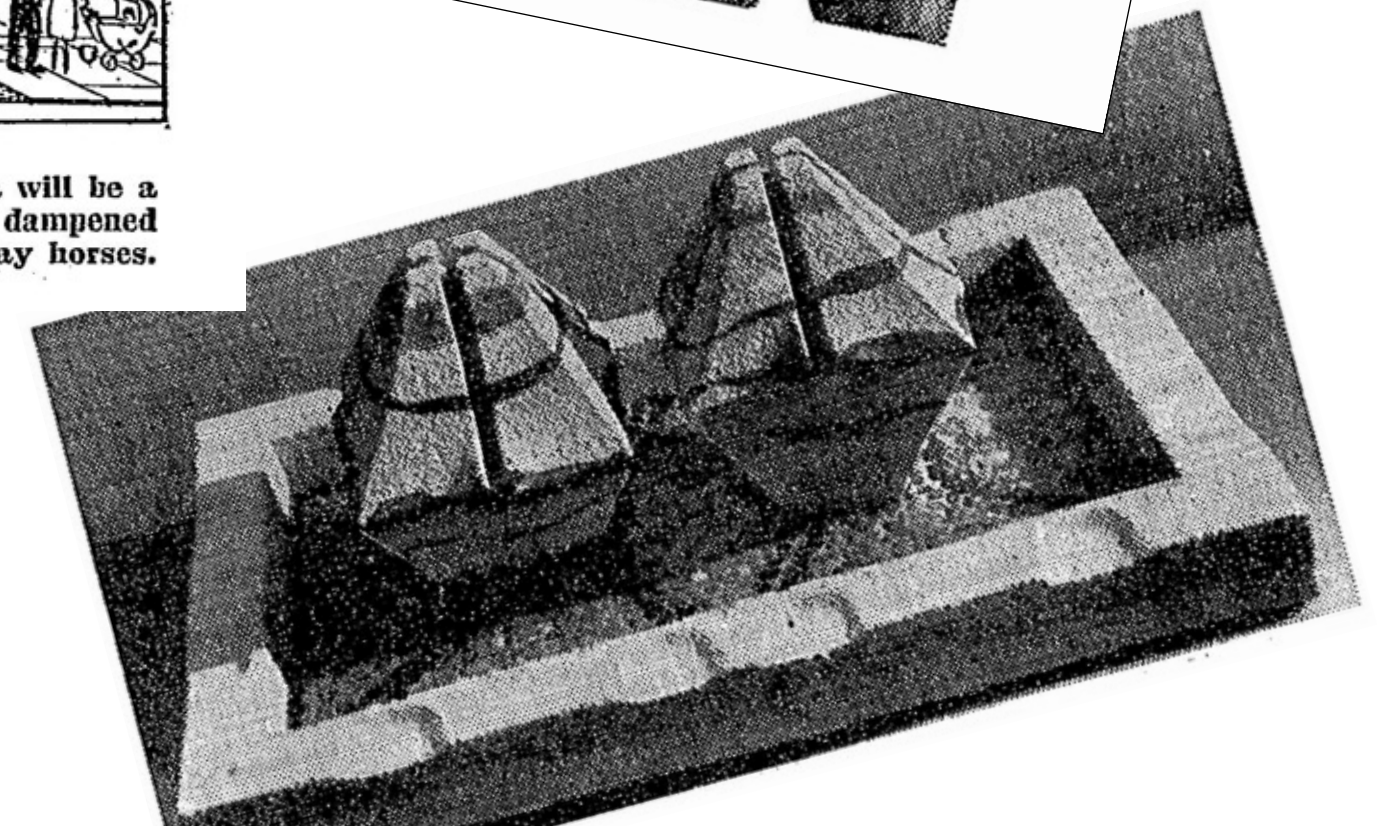
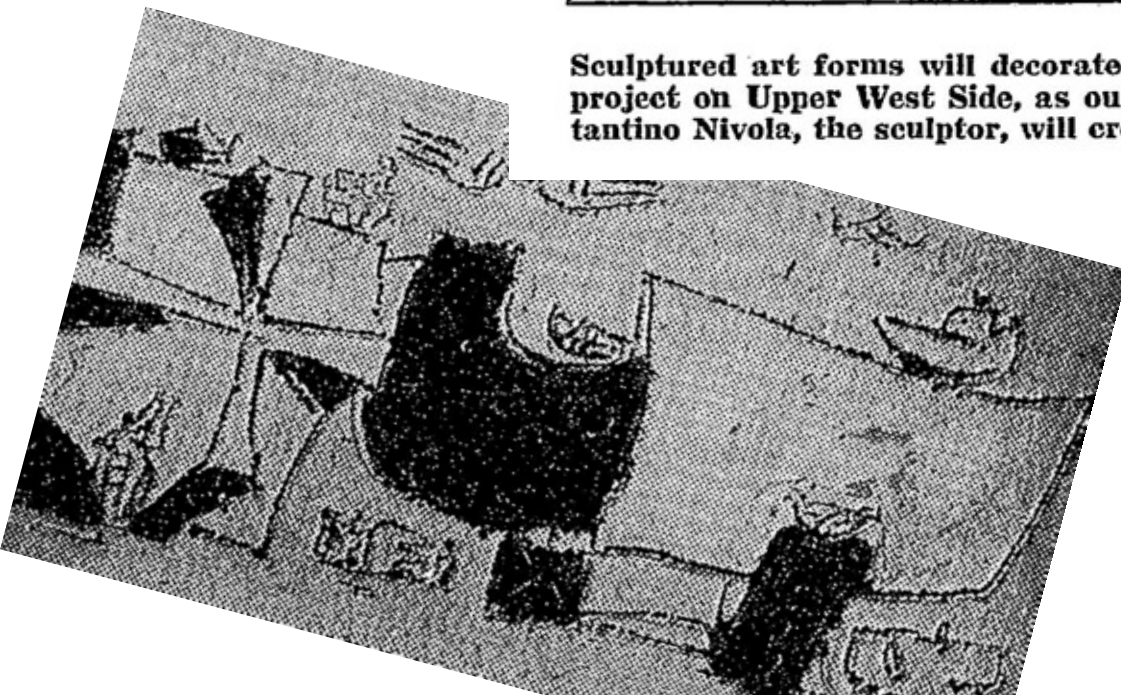
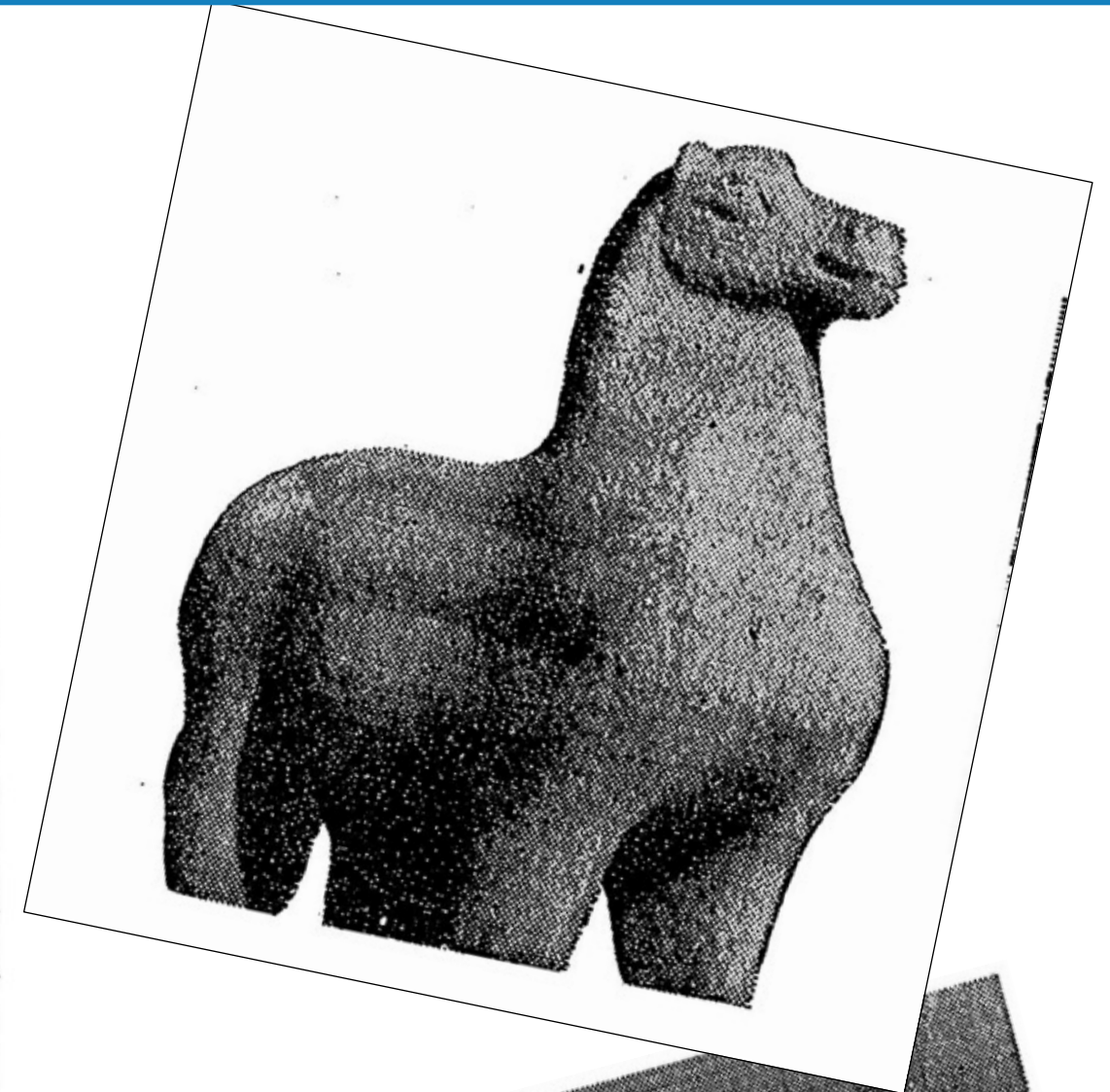
**SCULPTOR TO GIVE
A LIFT TO PROJECT**

Art Forms Will Have Free Play in a City Project's Community Plaza



Sculptured art forms will decorate plaza of this low-rent project on Upper West Side, as outlined in drawing. Costantino Nivola, the sculptor, will create graffiti of cement

stucco on wall at left. At far end of the plaza will be a sculptured wall, made by pouring concrete into dampened sand forms. In the center will be a herd of play horses.



Credit: New York Times, May 8 1964



1965 (Credit: Humphrey Sutton)

Costantino Nivola (circa 1950s)



Credit: Nivola Family Archive

ỏqÇ} bxà ỀỒ

1974
cast concrete

Beach Channel
High School
Queens, New York



Credit: Lea Bertucci/
Cooper Union

“Plump” Horses



Credit: Humphrey Sutton, 1965

Horses at Play



Credit: Humphrey Sutton, c. 1965

Horses seen in three colors (c. 1965)

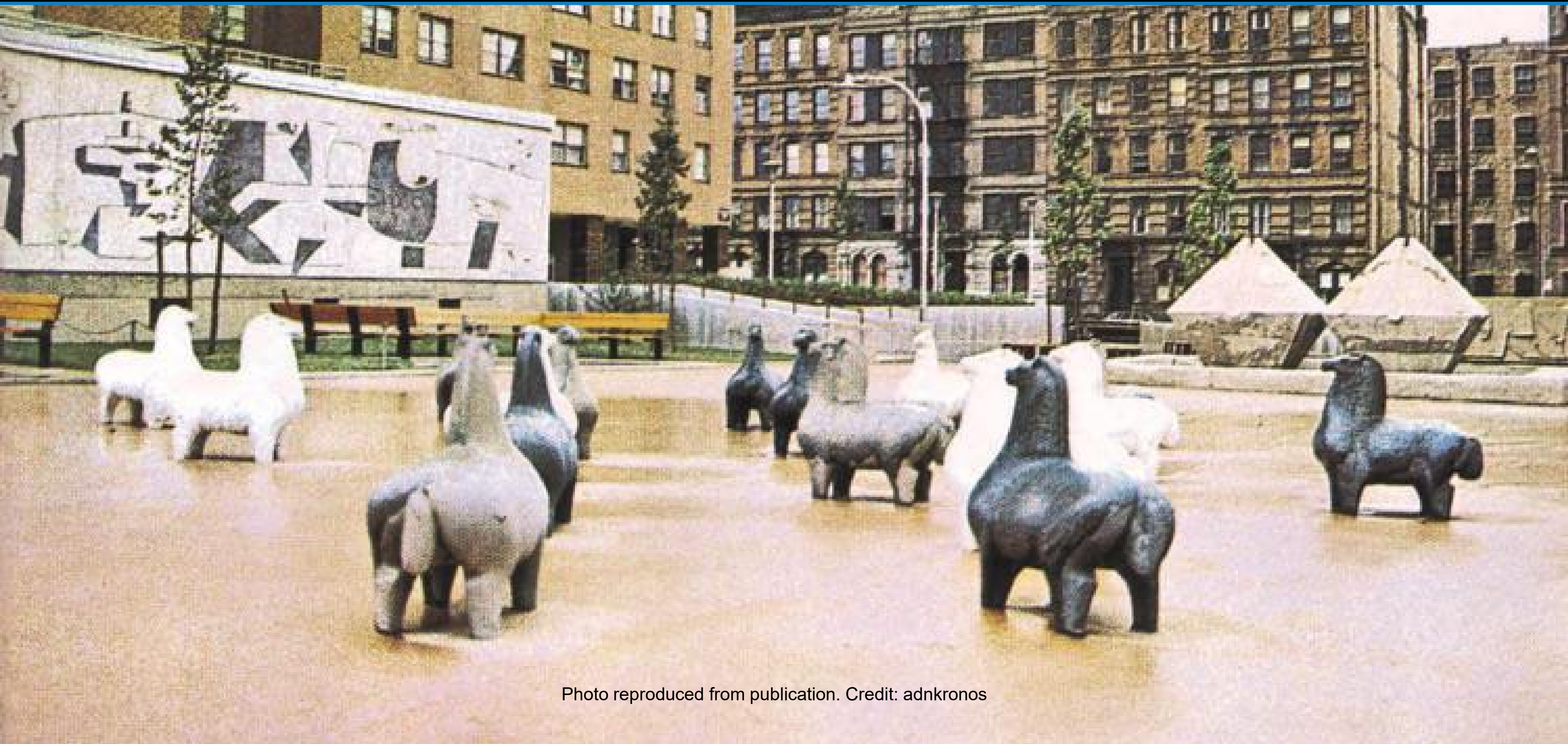


Photo reproduced from publication. Credit: adnkronos

Vandalized Muzzles



Credit: Angelino Mereu, 2010

Submerged hooves, missing muzzles and damaged tails (2010)



Credit: Angelino Mereu

The Water Main Break and Horses Being Removed (2021)



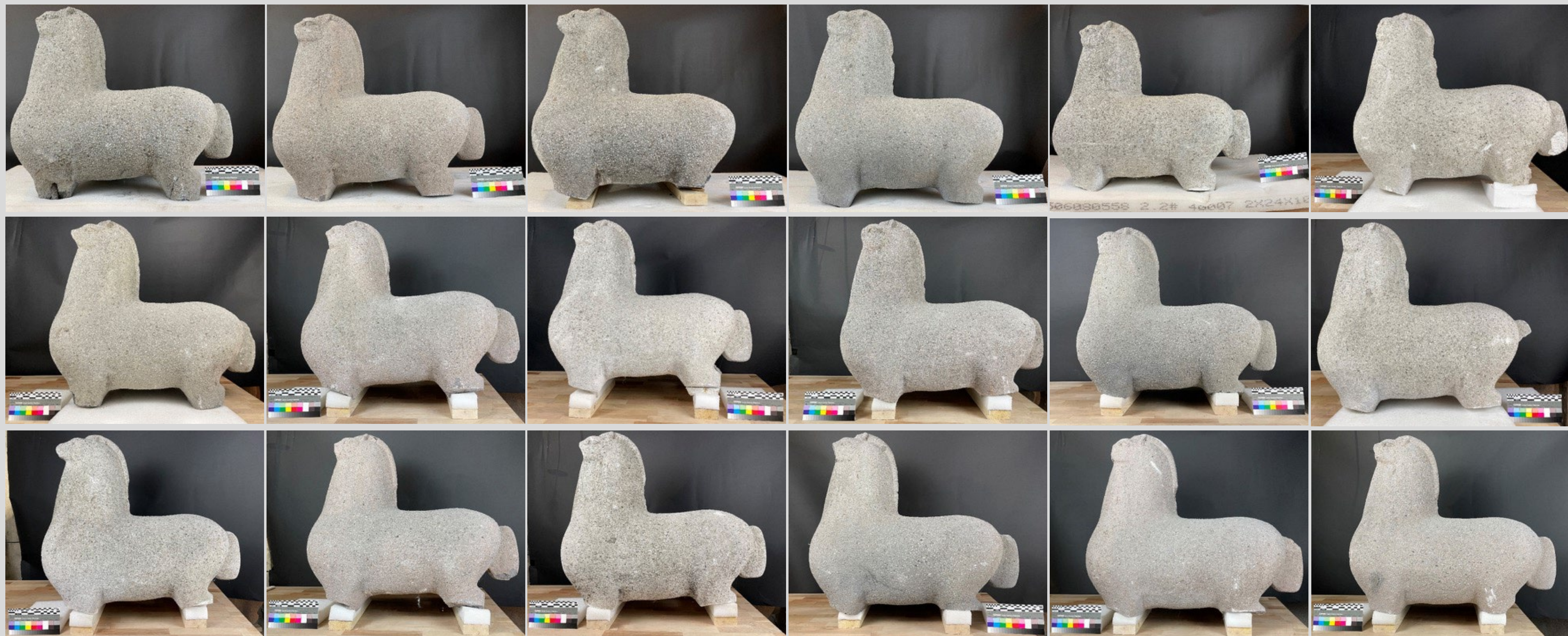
Challenge 1: Documentation



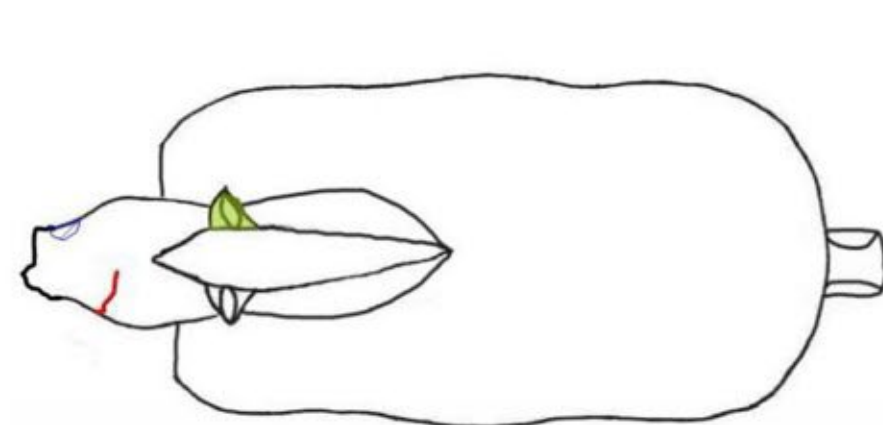
Where do you begin?



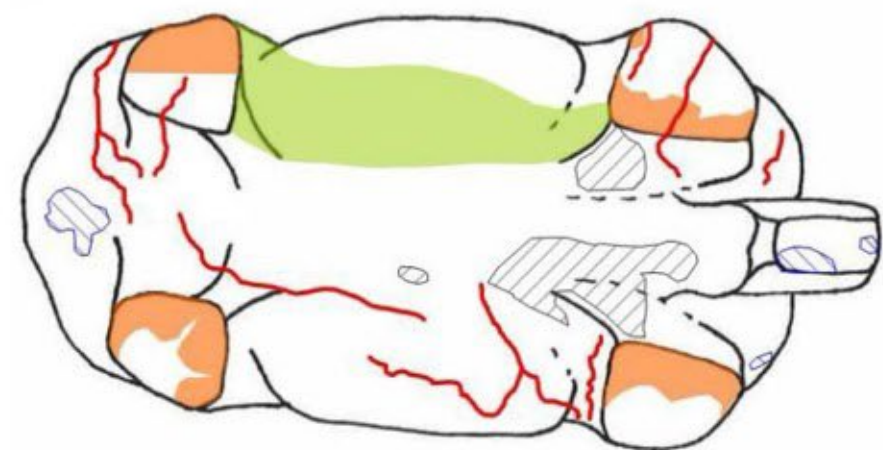
Each Horse Carefully Documented



Record All Conditions



TOP



BOTTOM

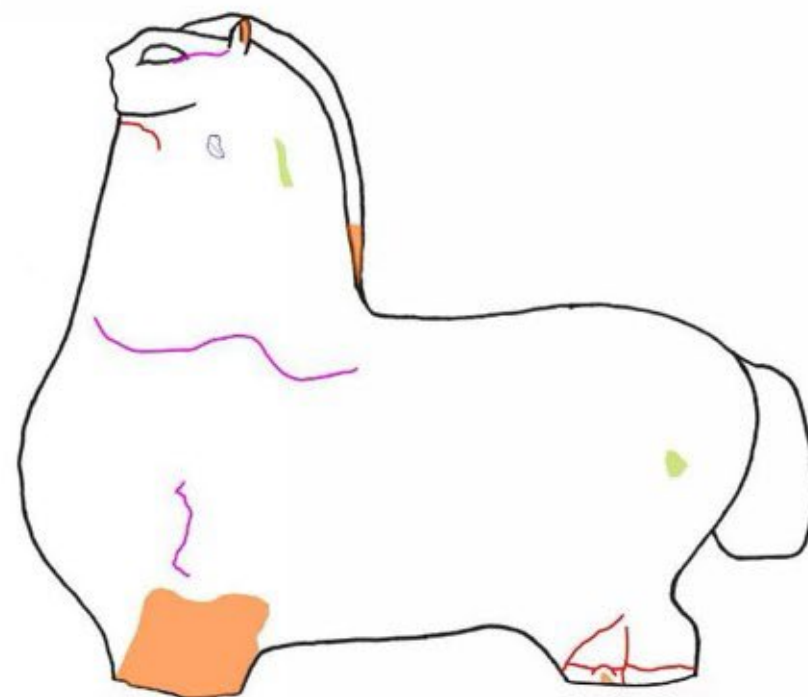
LEGEND

	Spall
	Abrasion
	Heavy Soiling
	Crack
	Hairline Crack
	Concrete Deposit
	Gypsum Deposit

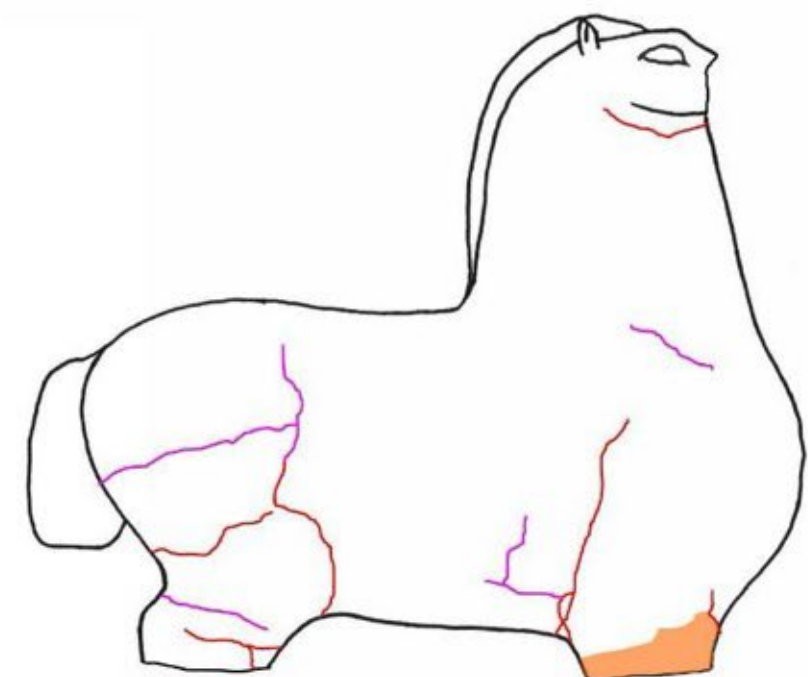
Typical Conditions (not shown):

- Light atmospheric and biological soiling.
- Surface loss due to weathering.
- Feet and portion of muzzle missing.

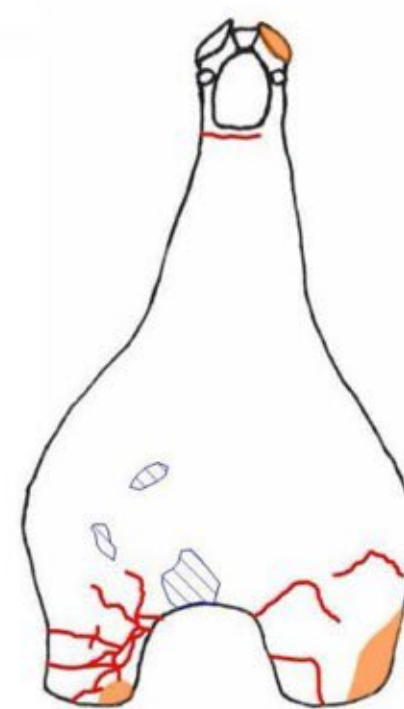
CONDITIONS GRAPHICS



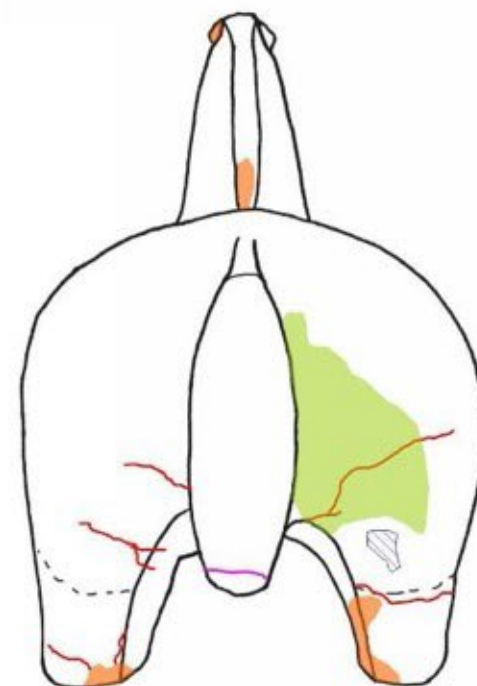
LEFT



RIGHT



FRONT



BACK

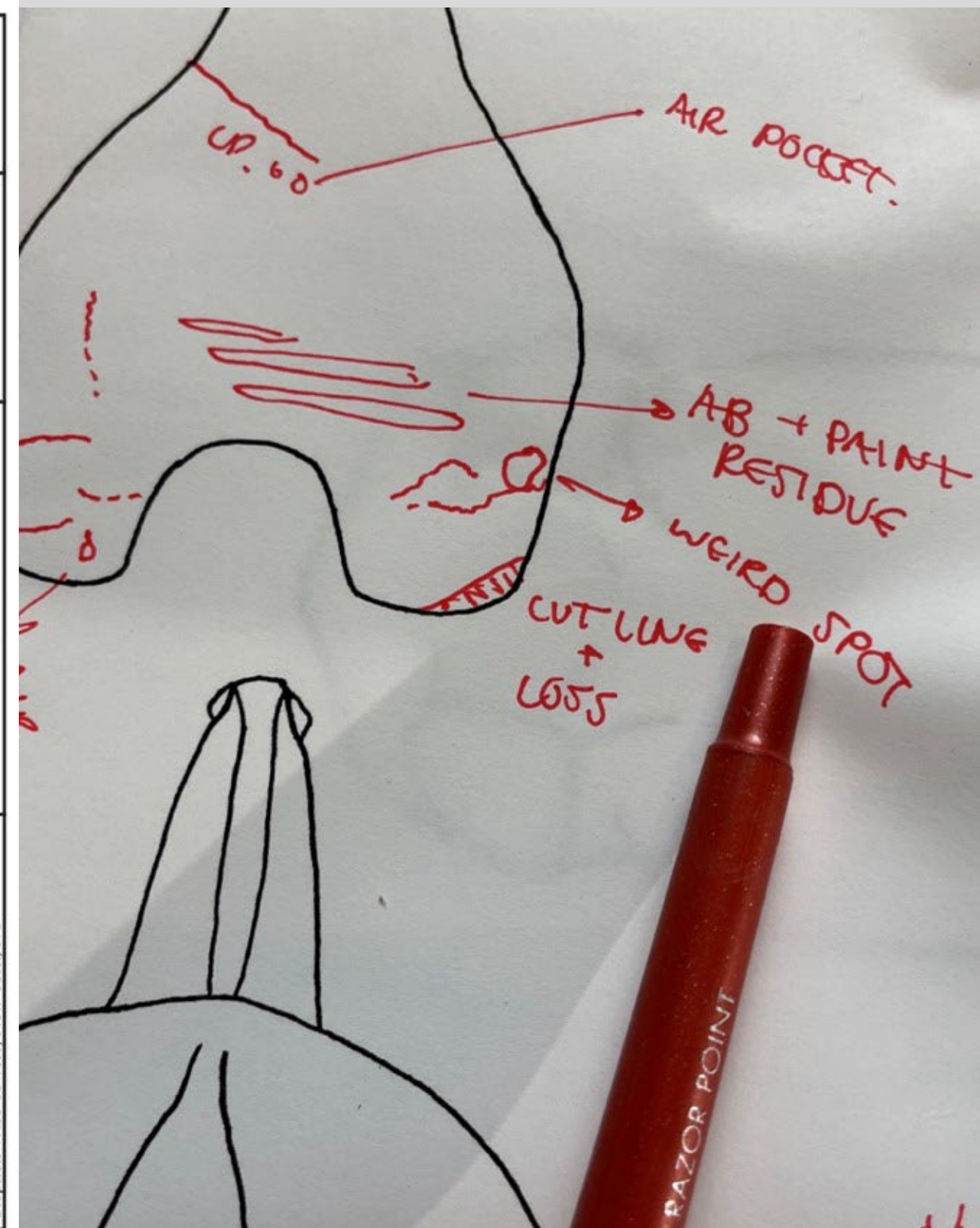
December 2021
A-01

HORSE NO. 01
COLOR: BLACK

Jablonski Building Conservation, Inc.
40 West 27th Street, Floor 12
New York, NY 10001



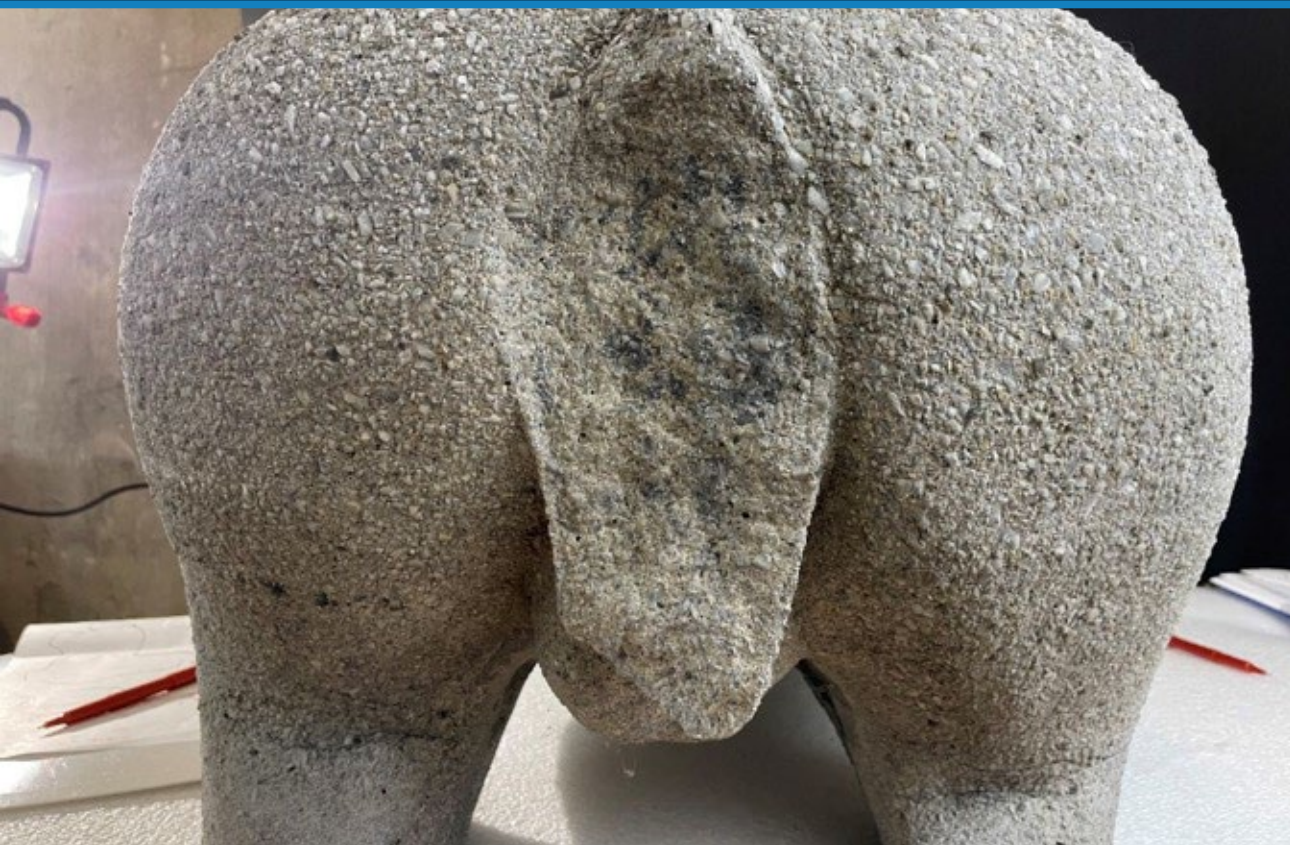
Nivola Play Horses
Conditions Assessment
Stephen Wise Towers, New York, NY



Documentation: Nothing to Reuse and Legs Different Lengths



Conditions: Losses



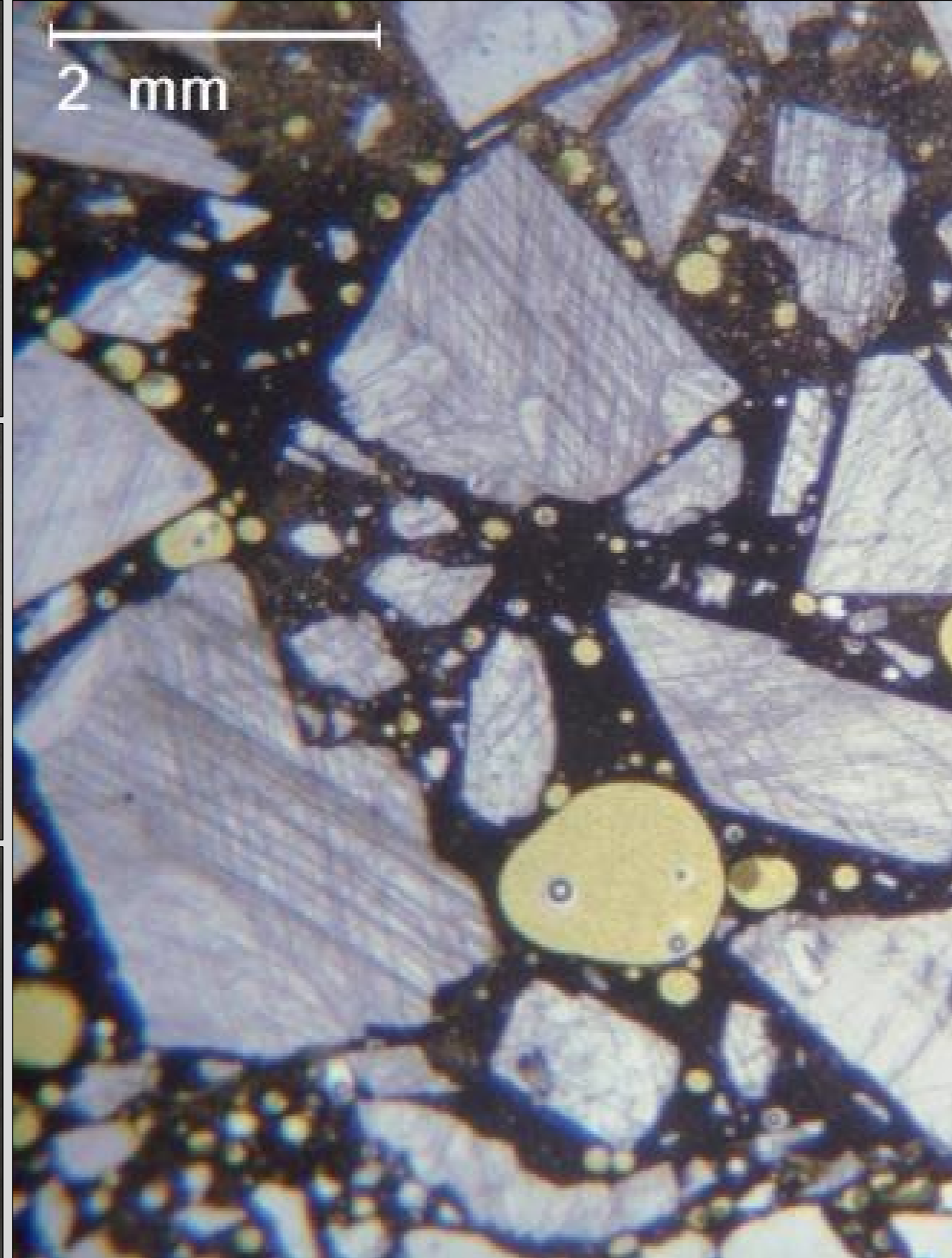
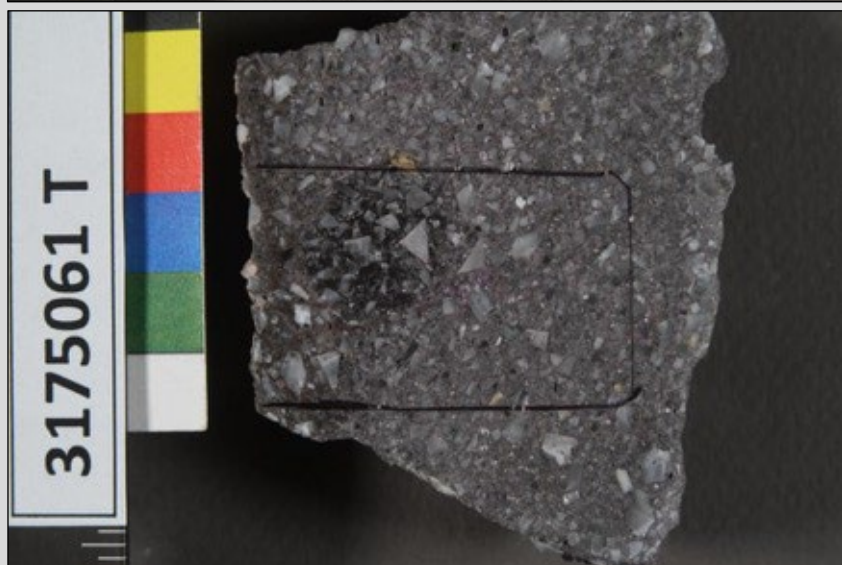
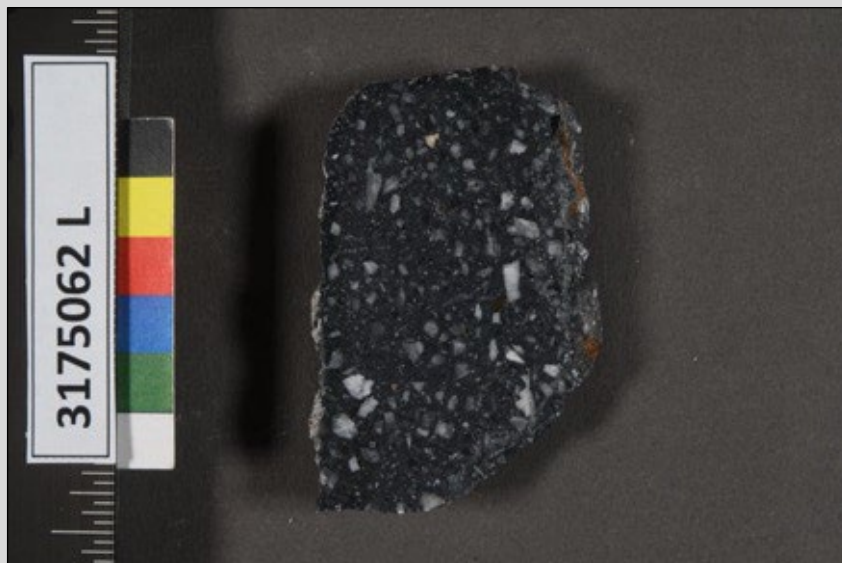
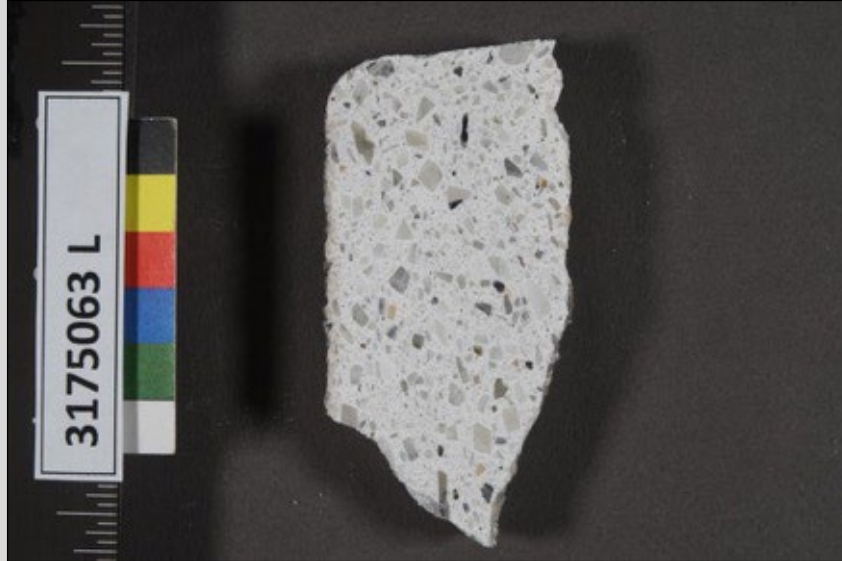
Conditions: Erosion



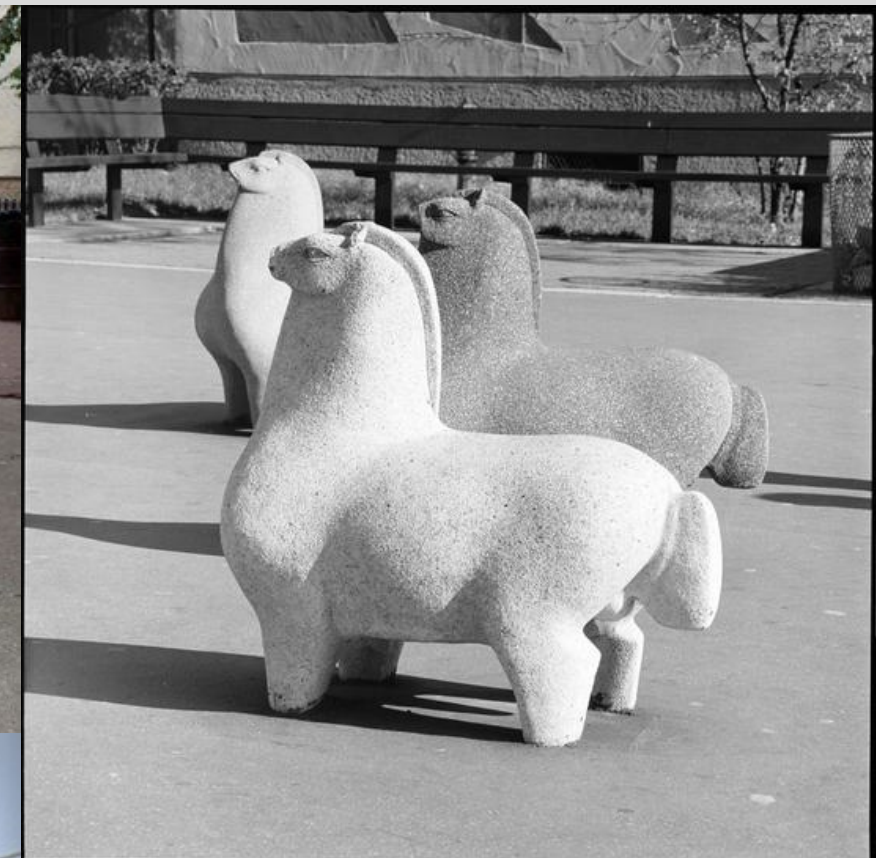
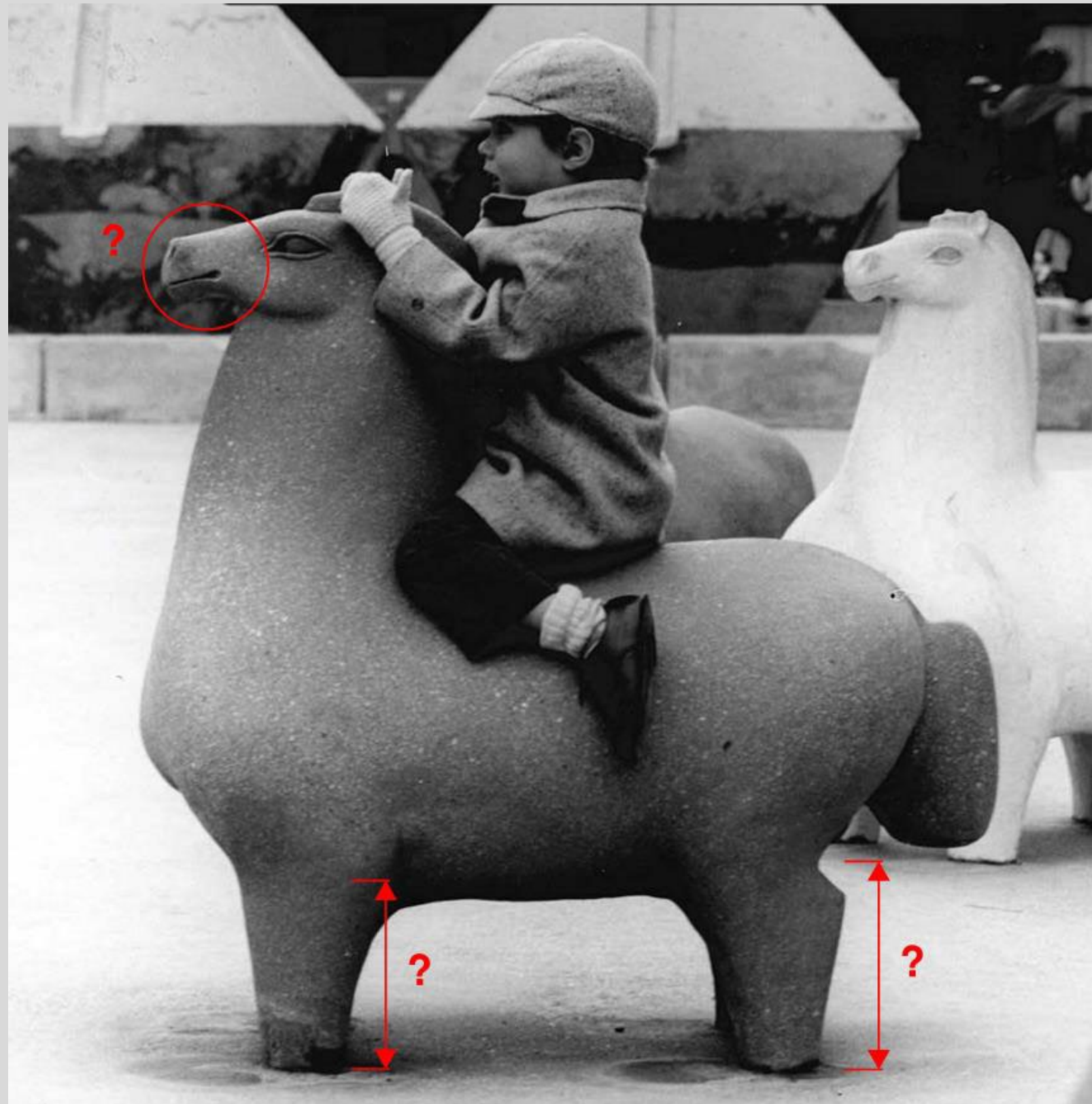
Conditions: Gypsum Crusts



Testing: Major Component of Documentation



Challenge 2: What are the Dimensions



Research... The Long Lost Herd



Horse Sculpture by
Constantino Nivola and donated
to W.D. Richards Elementary School
by Xenia S. and J. Irvin Miller.





Modification of the Legs

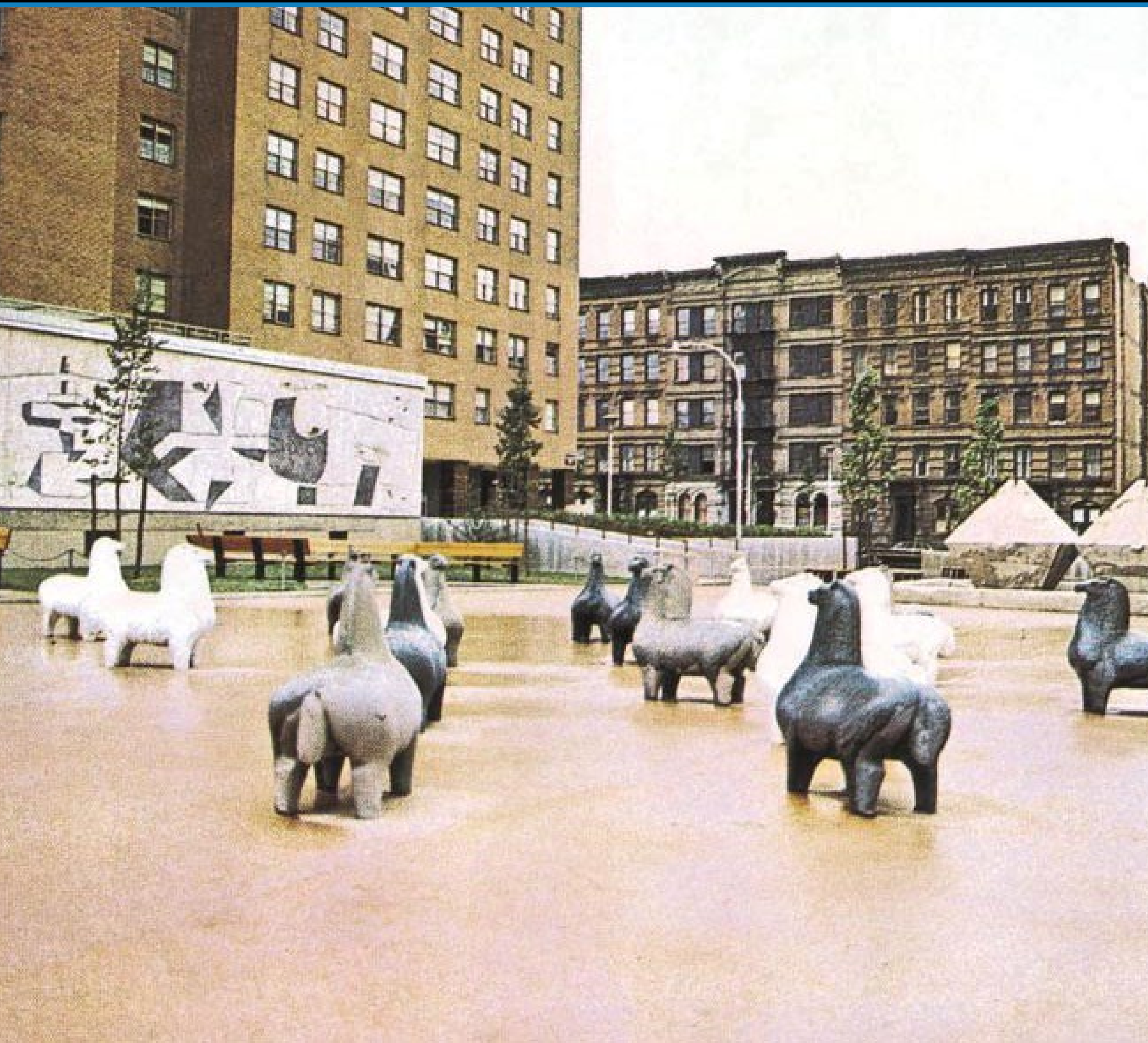


Live Content Slide

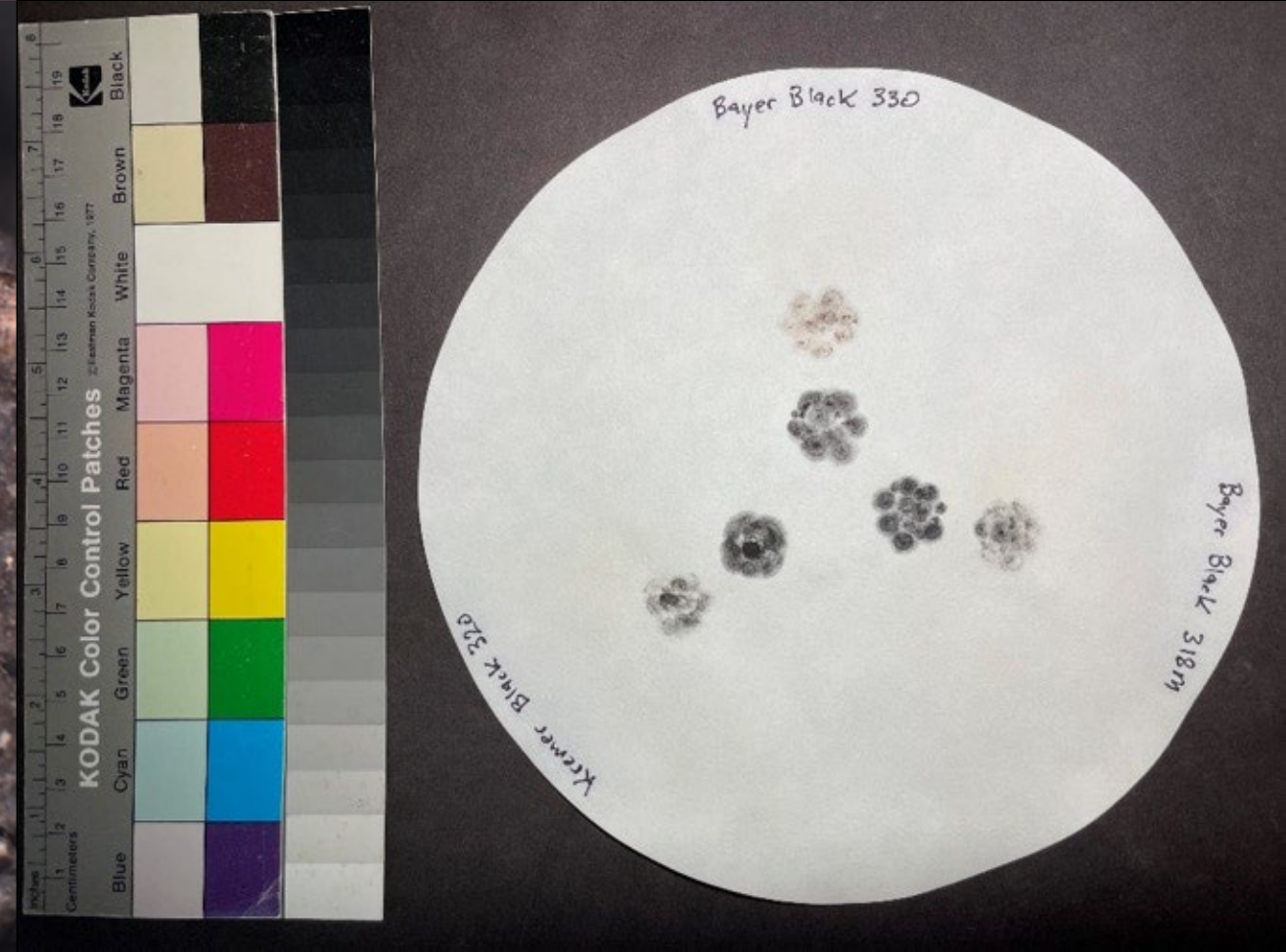
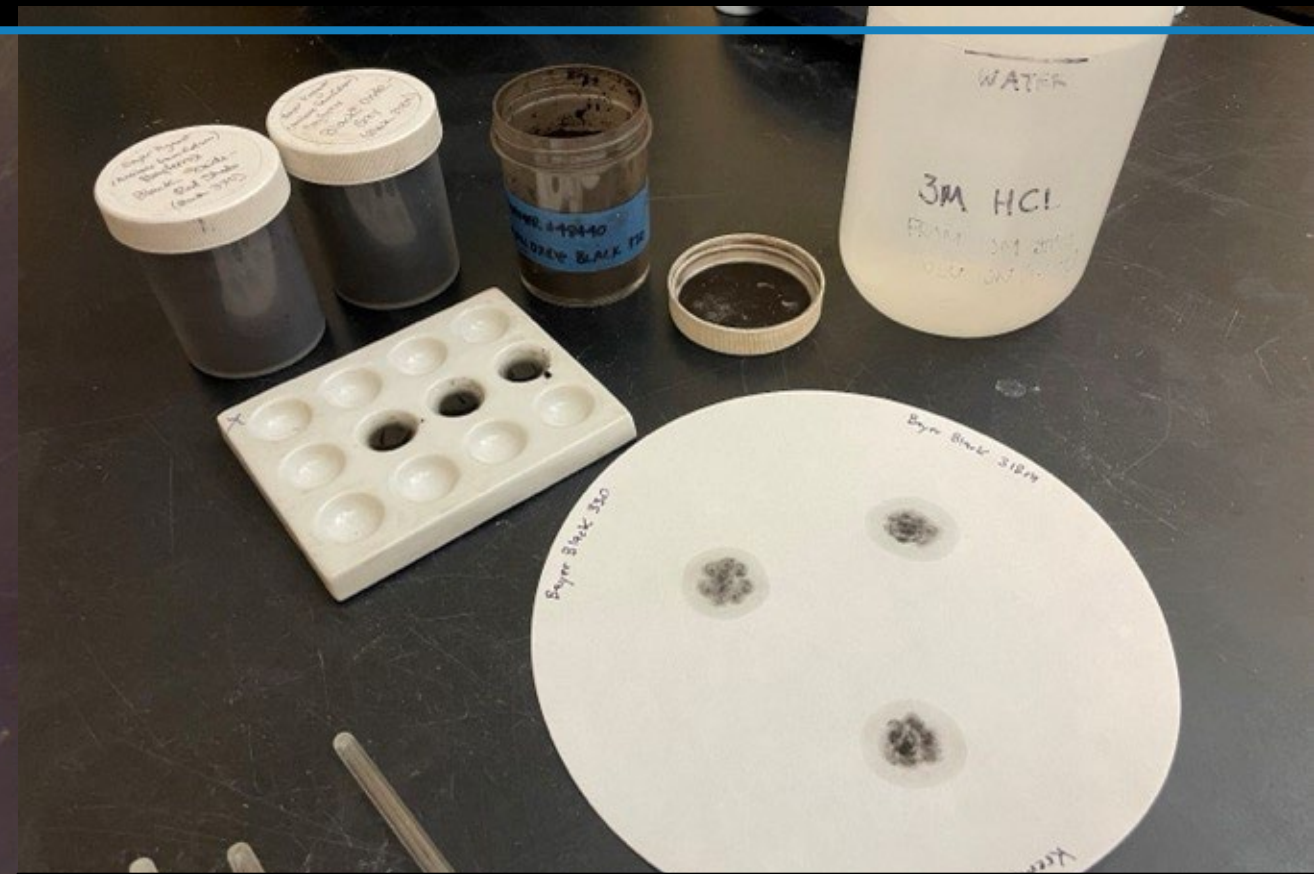
When playing as a slideshow, this slide will display live content

Poll: What has been the biggest problem you have had when trying to match existing the existing concrete when patching?

Challenge 3: Matching to Faded Color



Investigation of Color Change





Replicating Weathered Surface Color



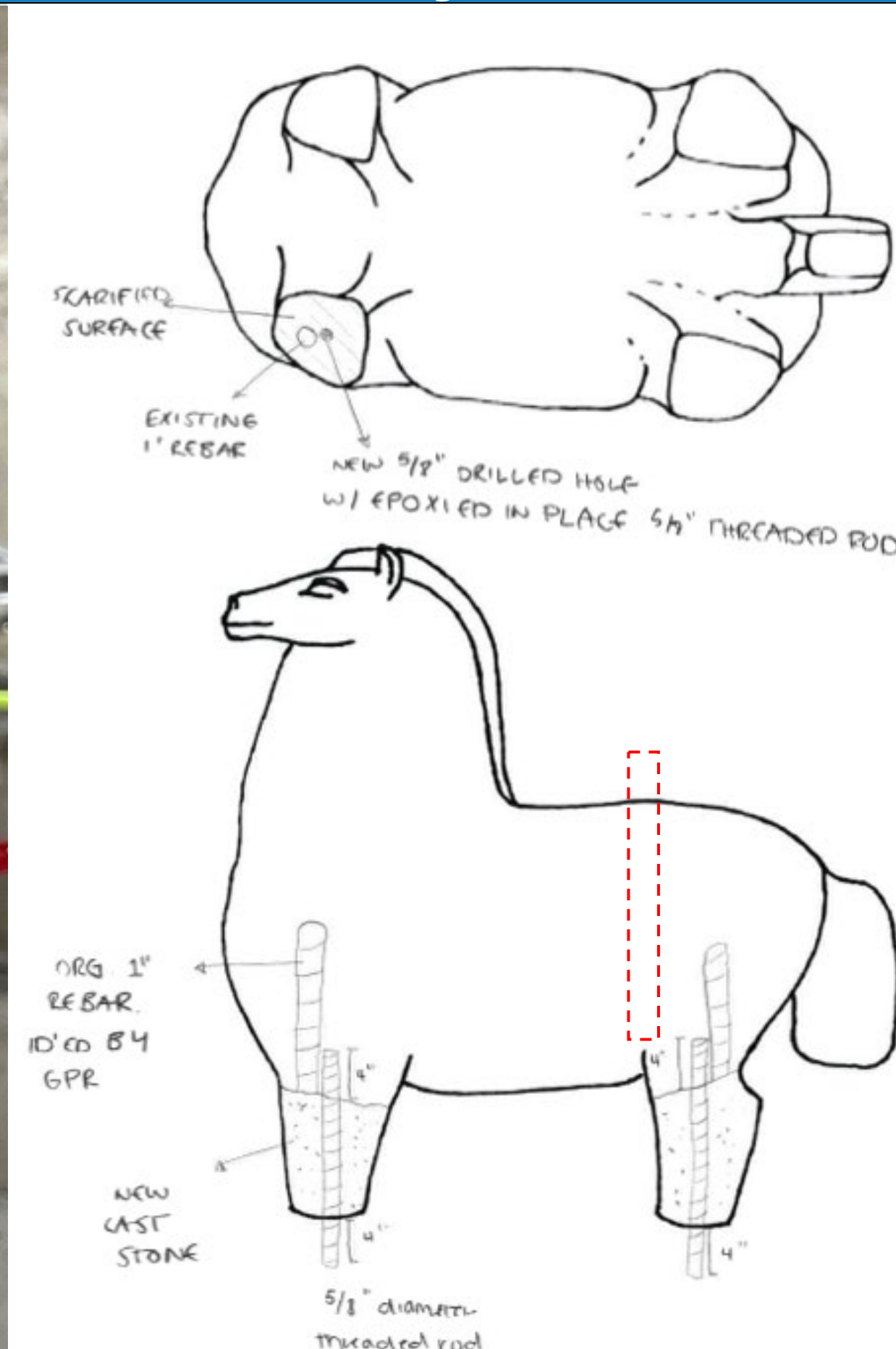
Challenge 4: Casting Repairs



A Lot of Trial and Error



Challenge 5: How to Structurally Attach the Legs



Second Round: Reinforcement of Legs



THIRD ROUND: Reinforcement of Legs





L Shaped Rebar for Embedment

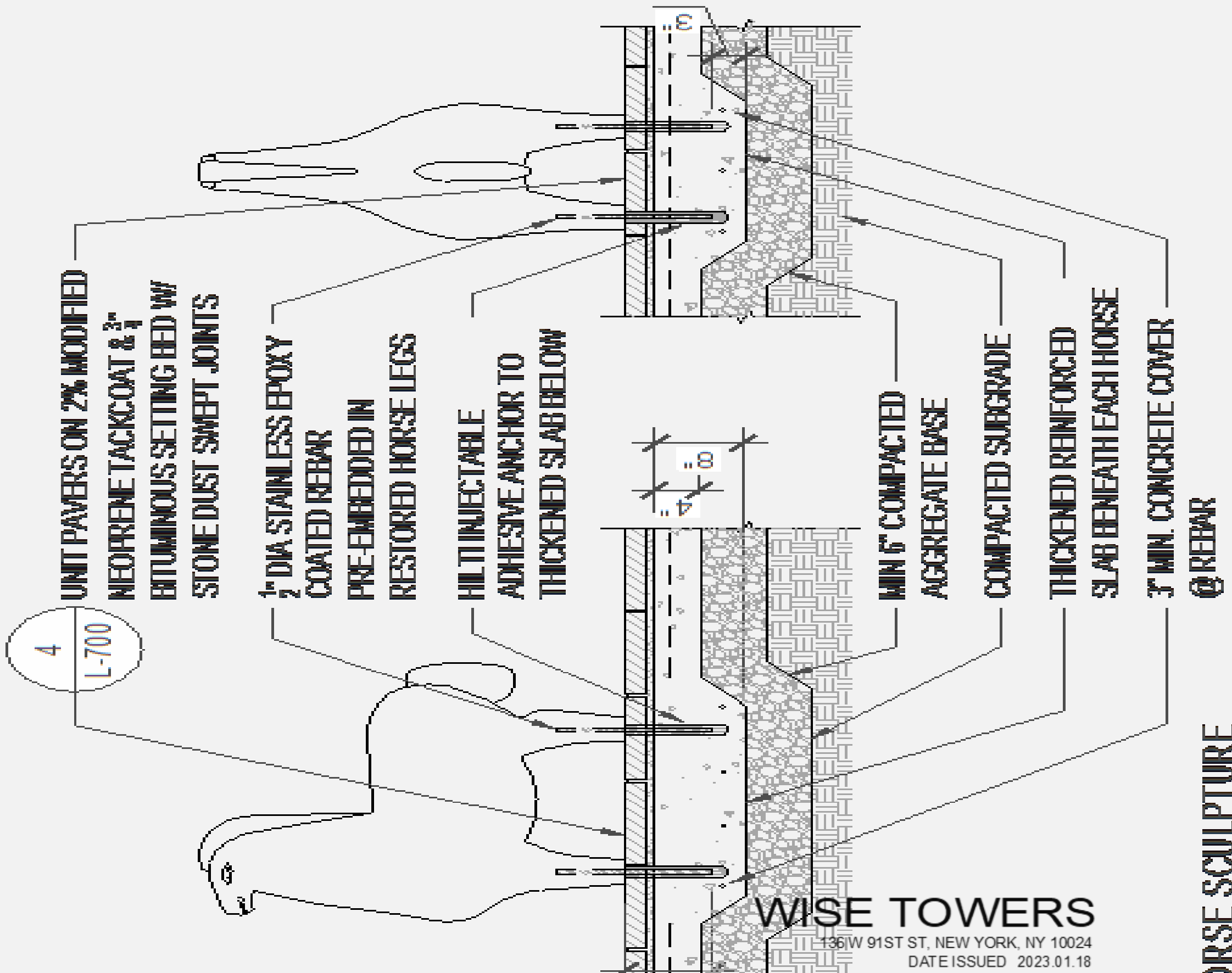




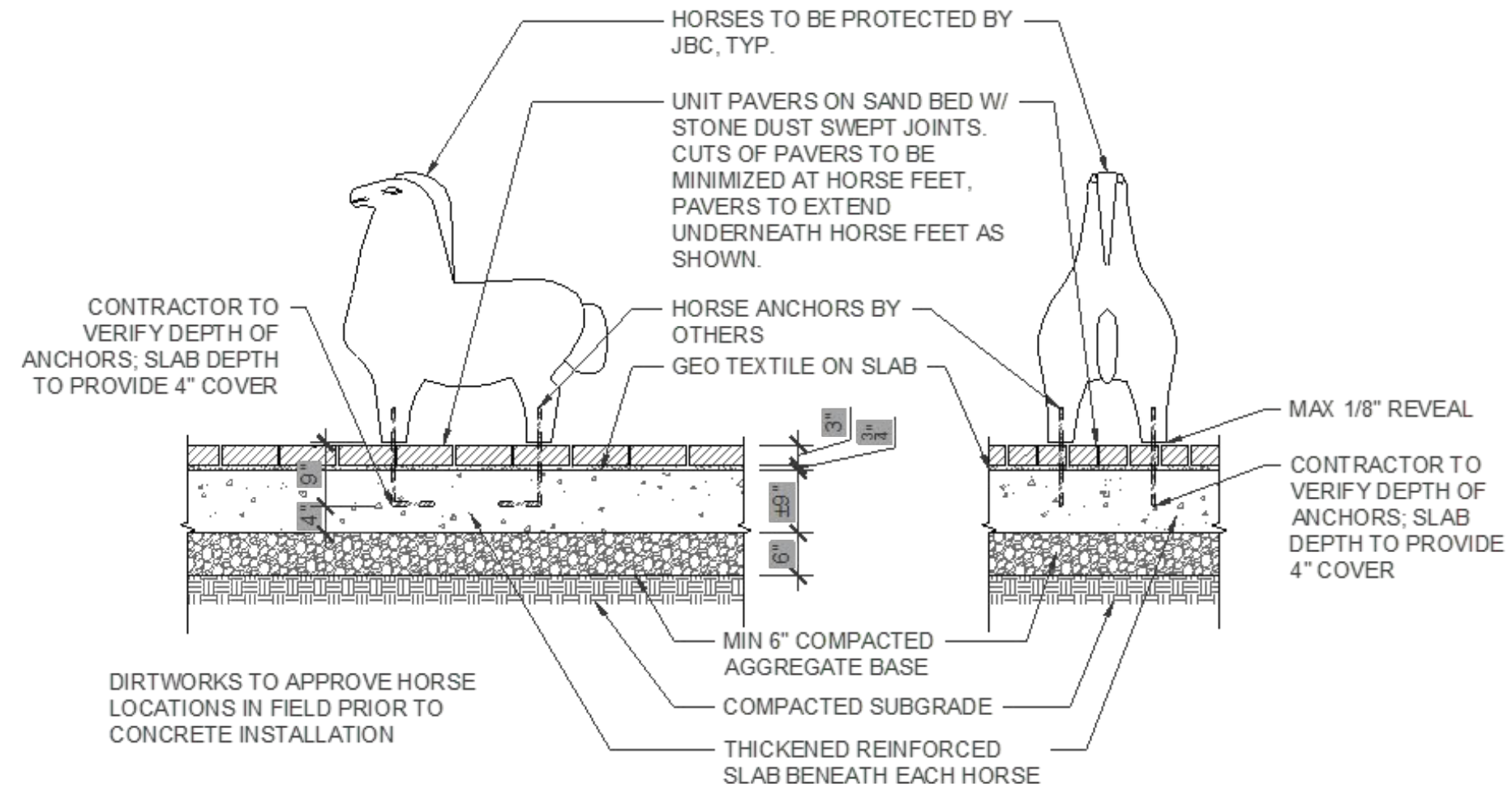
Touch-Ups



Challenge 6: Reinstallation of the Horses in the Concrete Pad

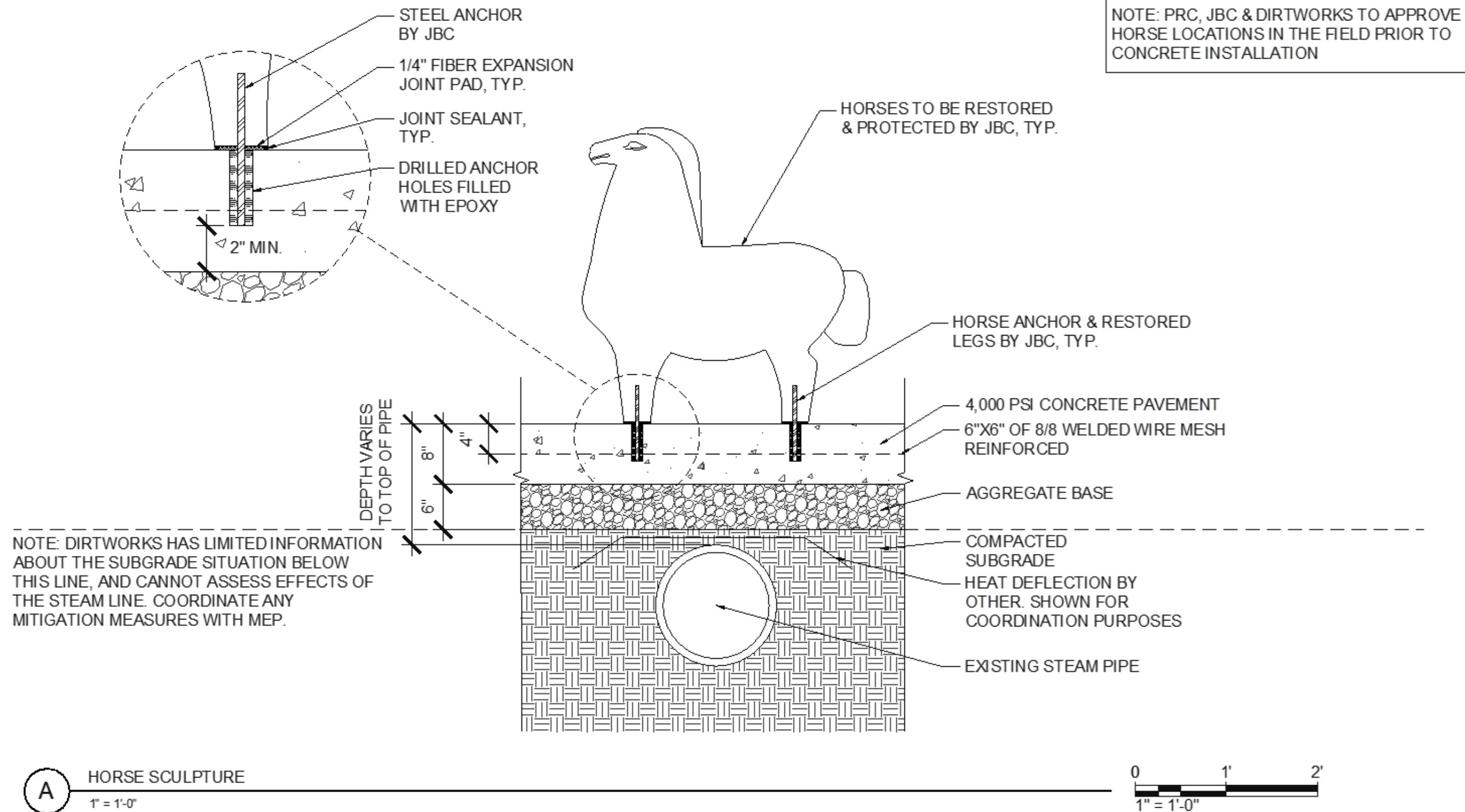


Installation Design for Horses 2



A HORSE SCULPTURE
1/2" = 1'-0"

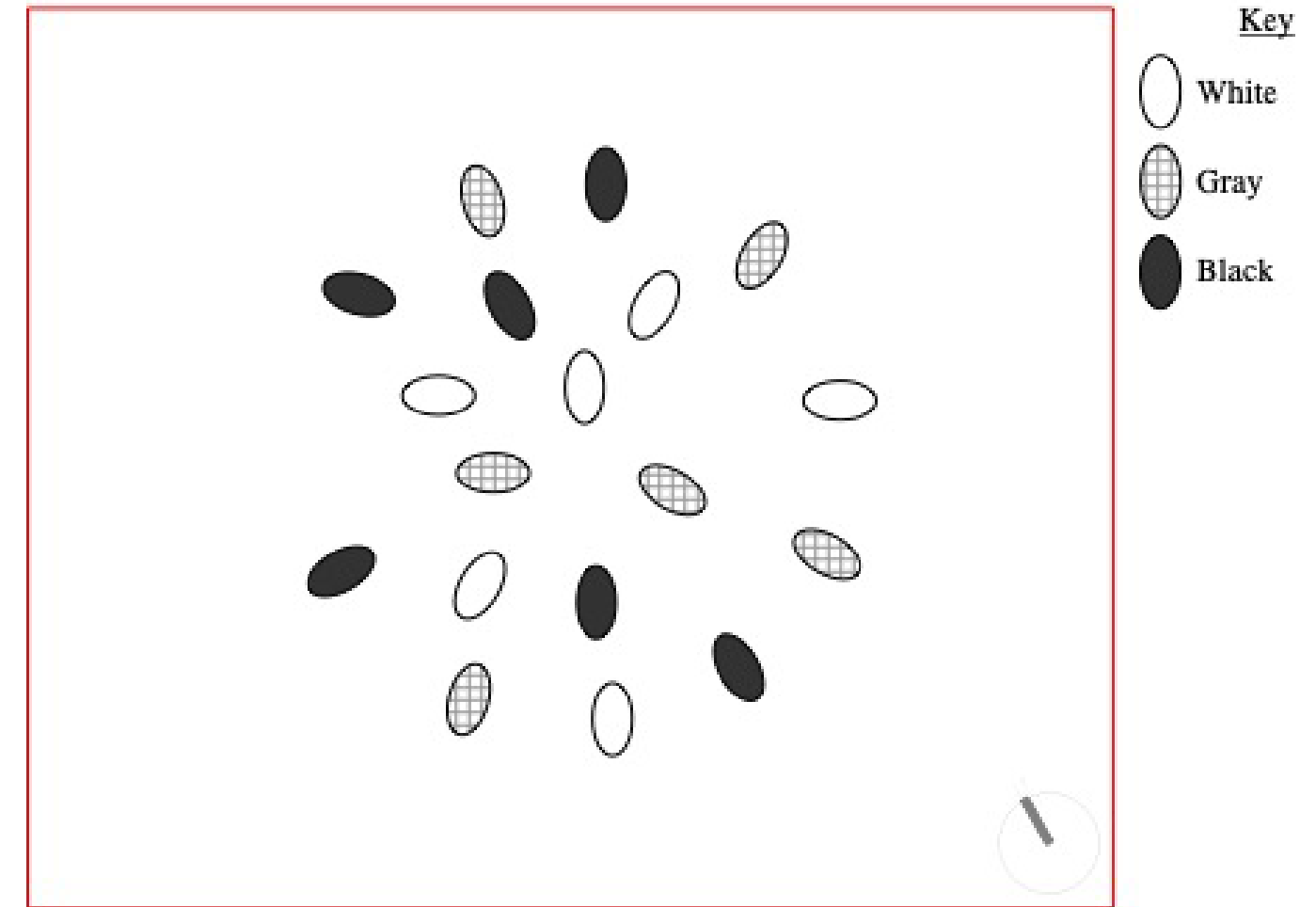
Installation Design for Horses 3



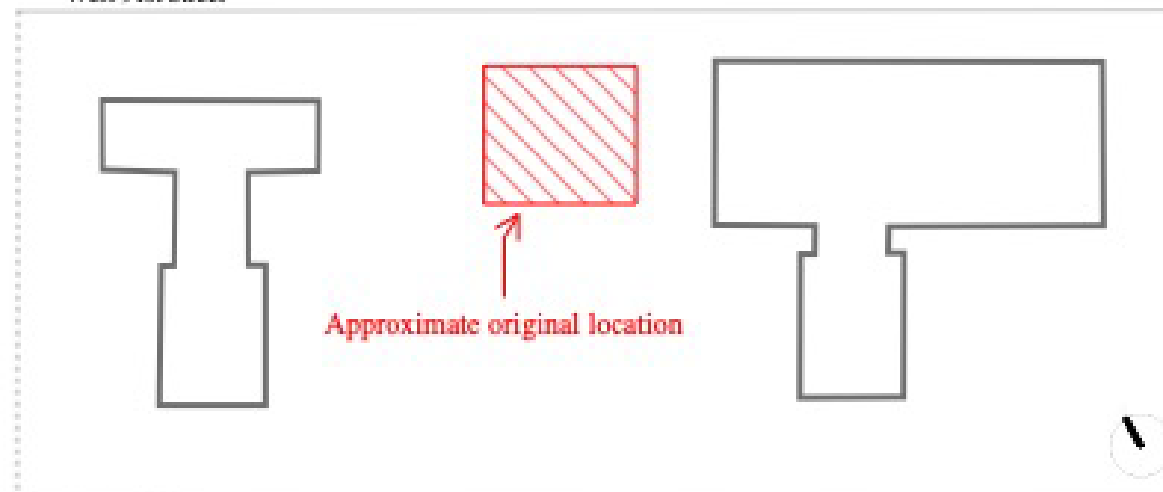
Challenge 7: Horse Installation Plan



Nivola Horses Sculptures Approx. Original Location

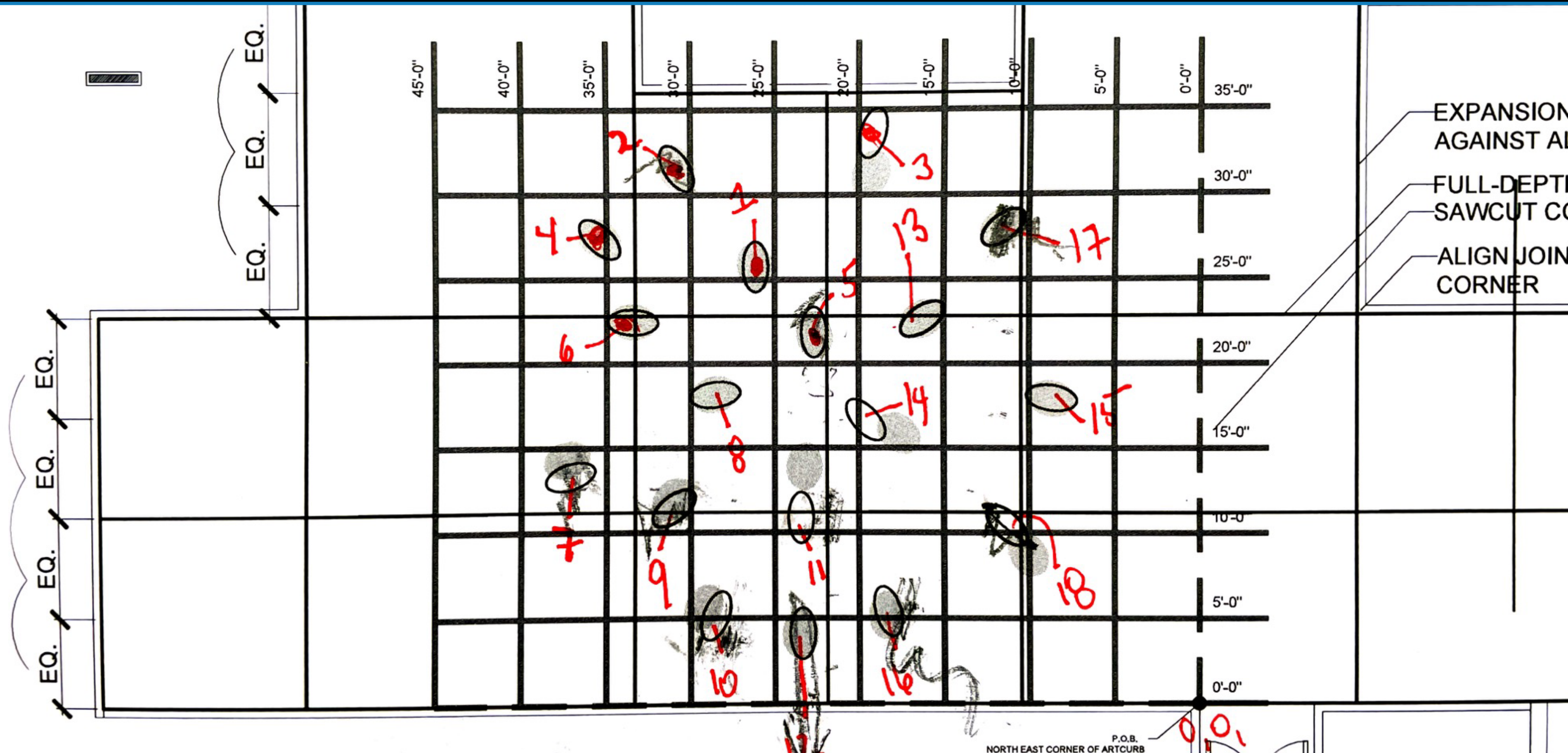


West 91st Street



West 90th Street

Installation Plan



Installation



Installation



The Herd is Back in its Pasture!



Credit: Ola Wilk



THANK YOU!

Client: **Amy Stokes, Pierre Downing**, from **PACT Renaissance Collaborative**

From **JBC**: Danielle Pape, Tania Alam, Ryan Zeek, Helen Thomas-Haney, Liv Manfredi, Gabriella Genao, Meris Westberg

Other crucial team members and supporters:

Landmark Columbus Foundation and **Richards Elementary School** in Columbus, IN
Ken Follett and **David Follet**

Ed Sewell and **Graham Henderson** from GB Geotechnics USA

Don Friedman and **Ellie Phetteplace** from Old Structures

Welder **Chris Hall** from Stonghold Systems NY

Harry Mazza from Manadnock Contracting

Alex Hart, Mark Tepper and Sarah Toth, Dirtworks Landscape Architecture

Contractor **ETC Companies**



SESSION EVALUATION

Resources

Evaluate this Session



To complete the session evaluation, open the ICRI Convention App.

Under **Plan Your Event**, select Schedule, and then the Technical Session you are attending. Select the sub-session you are attending, scroll down to Resources, and select Evaluate this Session.



] k v n r a p q f l k p ê



PAGETITLE

www.icri.org

2025 SPRING
CONVENTION
APRIL 13- 16, 2025