



EUCLID CHEMICAL

Spray Down Decorative Finishes Over Waterproofing Membranes



DECORATIVE CONCRETE BY
EUCLID CHEMICAL

John Weisbarth
National Accounts Manager
The Euclid Chemical Company

jweisbarth@euclidchemical.com

800-321-7628

Anthony Brienza
Training Manager
The Euclid Chemical Company

abrienza@euclidchemical.com

800-752-4626



2019 Spring Convention | April 8-10 | Jacksonville, Florida

Waterproofing
with **Aesthetics**
making it dry and appealing to the eye

Agenda

- **Why Choose Spray Down?**
- **Surface Prep**
- **Waterproofing Membrane Application**
- **Decorative Spray Down Application**
- **Advanced Options/Examples**



Why Choose Spray Down/Knock Down?

- **It's Beautiful**
- **Easy to Install**
- **Economical**
- **Non-Slip Surface**
- **Durable**
- **Unlimited Design Options**
 - Colors**
 - Textures**
 - Patterns**
- **Easy Maintenance**



Why Choose Spray Down/Knock Down?

- Non-Slip Surface



Highly Textured



Why Choose Spray Down/Knock Down?

- Durable



Why Choose Spray Down/Knock Down?

- Unlimited Design Options
 - Colors
 - Textures
 - Patterns



Why Choose Spray Down/Knock Down?

- Easy Maintenance



Surface Preparation



Surface Preparation

Is the surface suitable, or are there issues to remedy before proceeding?



Profile Surface per Manufacturer Instructions

Surface Preparation Concrete Surface Profile- CSP

Caution! The texture and appearance of the profile obtained will vary depending on the concrete strength, the size and type of aggregate, and the finish of the concrete surface. On sound substrates, the range of variation can be sufficiently controlled to resemble the referenced CSP standard. As the depth of removal increases, the profile of the prepared substrate will be increasingly dominated by the type and size of the coarse aggregate.



Fig. 6.1: CSP 1
(acid-etched)

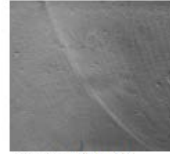


Fig. 6.2: CSP 2
(grinding)

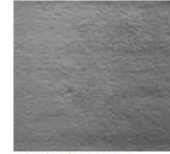


Fig. 6.3: CSP 3
(light shotblast)



Fig. 6.4: CSP 4
(light scarification)

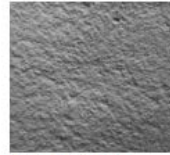


Fig. 6.5: CSP 5
(medium shotblast)

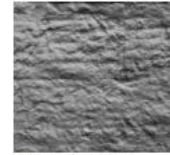


Fig. 6.6: CSP 6
(medium scarification)



Fig. 6.7: CSP 7
(heavy abrasive blast)

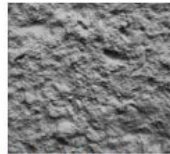


Fig. 6.8: CSP 8
(scabbled)



Fig. 6.9: CSP 9
(heavy scarification—
rotomilled)

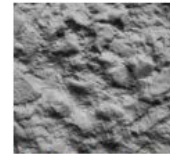


Fig. 6.10: CSP 10
(handheld concrete
breaker followed by
abrasive blasting)

ICRI Technical Guideline
310.2R- 2013

Surface Preparation

Mechanical Means of Surface Preparation

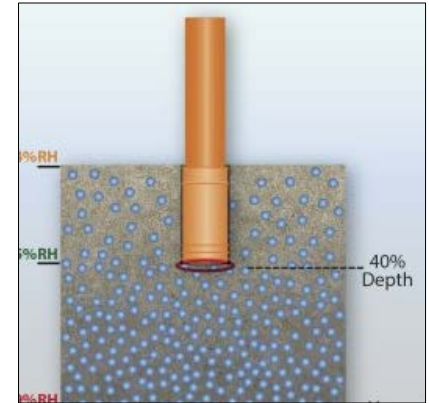
ICRI Technical Guideline 310.2R- 2013



Surface Preparation

Perform Moisture Test per Manufacturer Instructions

- ASTM D4263 (Polyethylene sheet)
- ASTM F1869 (Calcium Chloride test)
- Moisture Meters
- ASTM F2170 (RH test)



Surface Preparation

Completed Prep Results in a Clean, Dry, and Sound Profiled Surface



Waterproofing Preparation

Fix Cracks, Fill Joints, Make Repairs per
Manufacturer Instructions



Waterproofing Preparation

Flash in Any Birdbaths or Low Laying Areas



Waterproofing Preparation

Detail Horizontal to Vertical Junctures and Around Drains and Pipes



Waterproofing Preparation



Mask Off Adjoining Surfaces

Basic Waterproofing Membrane Application



Primer Application

- Apply uniform application of epoxy primer.
- Apply at manufacturer's recommended coverage rate.
- Do not allow primer to puddle.

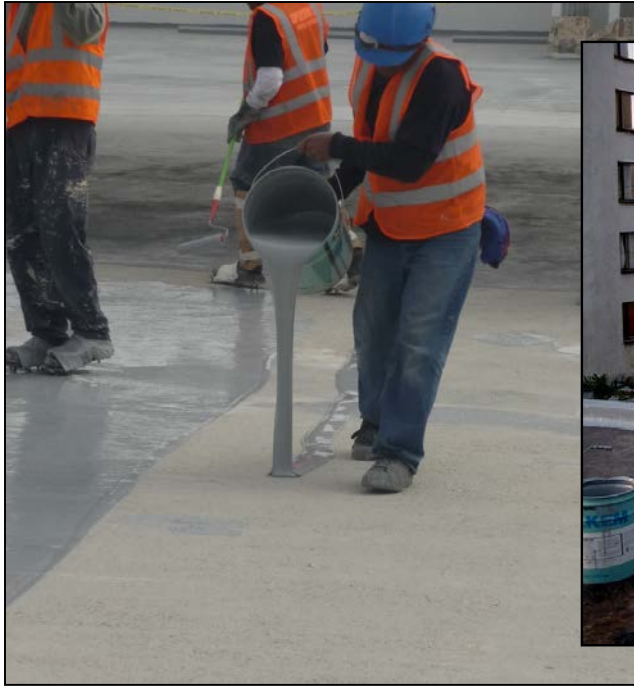
Basic Membrane Application

Waterproofing Membrane

- When epoxy primer is tack free, but no more than 24 hours.
- Mix Membrane base coat thoroughly.



Basic Membrane Application



Apply Membrane at Recommended Thickness (usually @40 mils)



Spiked Roller

Basic Membrane Application



A Spiked Roller should be used to remove entrapped air prior to initial set.



Spiked Roller

Decorative Spray Down/Knock Down Application

Step one....a sand seeded till refusal surface

When Membrane is tack free but no more then 24hr apply.



Either 2nd membrane coat @ < 200sf/gal



Or, Epoxy @ 100sf/gal

Decorative Spray Down/Knock Down Application

While your Epoxy or Membrane coat is still tacky
Broadcast coarse sand until refusal.



Decorative Spray Down/Knock Down Application

Use a Scrapper to Knock Loose Poorly Bonded Sand, Then Sweep, Vacuum, or Blow Clean



Decorative Spray Down/Knock Down Application

Step two....mix and apply scratch (base) coat

Scratch Coat

- Mix grout per directions.
- Apply at least 1/8" over the sand seeded surface.
- Use a gauge rake and magic trowel to apply a consistent coat.



Decorative Spray Down/Knock Down Application

Step three....what coloring method does the project call for?



Decorative Spray Down/Knock Down Application

Single Color Knock Down

- Mix grout to a pancake batter consistency
- Spray the grout with a Hopper Gun at low pressure
- Typically you are going to cover 70%-80% of your area



Decorative Spray Down/Knock Down Application

Single Color



Decorative Spray Down/Knock Down Application

Single Color



Scrape



Broom



Blow clean

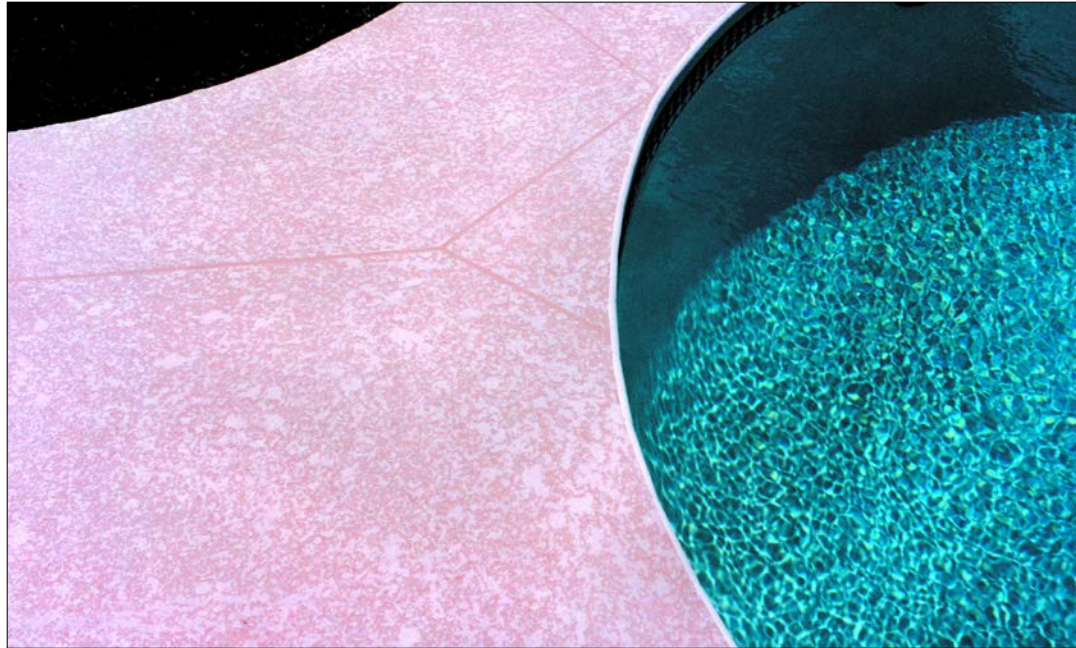
Decorative Spray Down/Knock Down Application

Single Color



Decorative Spray Down/Knock Down Application

Single Color



Decorative Spray Down/Knock Down Application

Multi Color



Mix Grout

- You can add an integral color at this point.



Apply Slurry Coat

- Use a gage rack or Magic trowel to apply at least 1/8" thick.

Decorative Spray Down/Knock Down Application

Multi Color



Lay Stencil or Tape



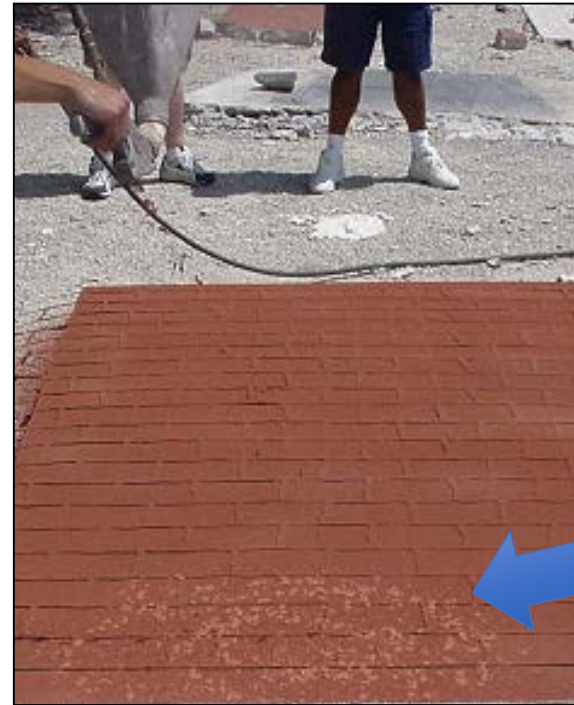
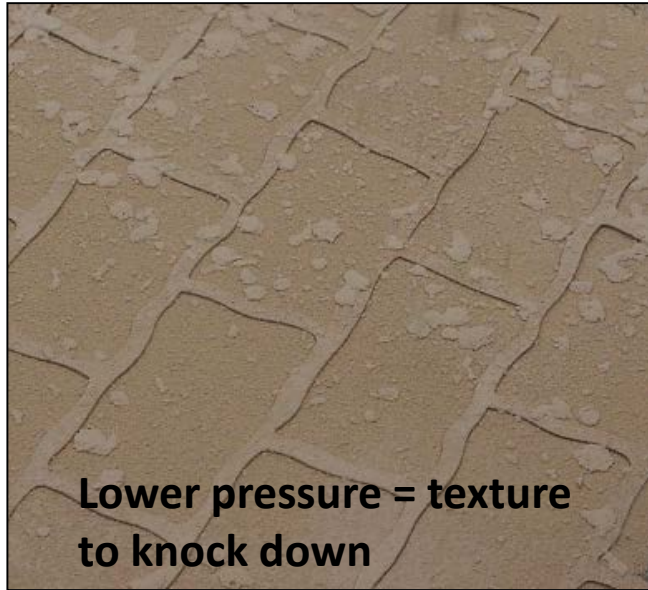
Decorative Spray Down/Knock Down Application

Multi Color



Decorative Spray Down/Knock Down Application

Multi Color



Decorative Spray Down/Knock Down Application

Multi Color



Decorative Spray Down/Knock Down Application

Multi Color



Scrape



broom



blow clean

Decorative Spray Down/Knock Down Application

Multi Color



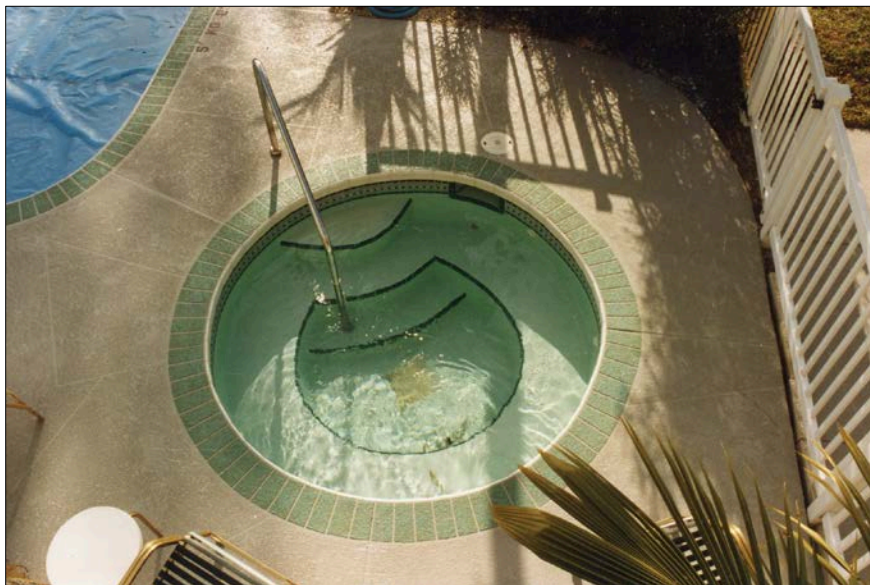
Examples & Advanced Options

Single color



Examples & Advanced Options

Single color– combo single color with multi color (different color) borders



Examples & Advanced Options

Single color– combo single color with multi color (different color) borders



Examples & Advanced Options

Integrally colored (Multi color with pattern)



Examples & Advanced Options

Integrally colored (Multi color with pattern)



Examples & Advanced Options

Integrally colored (Multi color with pattern)



Examples & Advanced Options

Integrally colored (Multi color with pattern)



Examples & Advanced Options

Integrally colored (Multi color with pattern)



Examples & Advanced Options

Integrally colored- Speckled



Examples & Advanced Options

Integrally colored- Speckled



Examples & Advanced Options



Examples & Advanced Options



Examples & Advanced Options



Examples & Advanced Options



2019 Spring Convention | April 8-10 | Jacksonville, Florida

Waterproofing
with **Aesthetics**
making it dry and appealing to the eye

Examples & Advanced Options



2019 Spring Convention | April 8-10 | Jacksonville, Florida

Waterproofing
with **Aesthetics**
making it dry and appealing to the eye

Examples & Advanced Options





EUCLID CHEMICAL

Any



Questions



DECORATIVE CONCRETE BY
EUCLID CHEMICAL

John Weisbarth
National Accounts Manager
The Euclid Chemical Company

jweisbarth@euclidchemical.com

800-321-7628

Anthony Brienza
Training Manager
The Euclid Chemical Company

abrienza@euclidchemical.com

800-752-4626



2019 Spring Convention | April 8-10 | Jacksonville, Florida

Waterproofing
with **Aesthetics**
making it dry and appealing to the eye