

STATE OF THE INSTITUTE

BY KELLY M. PAGE, ICRI EXECUTIVE DIRECTOR



INTERNATIONAL CONCRETE REPAIR INSTITUTE

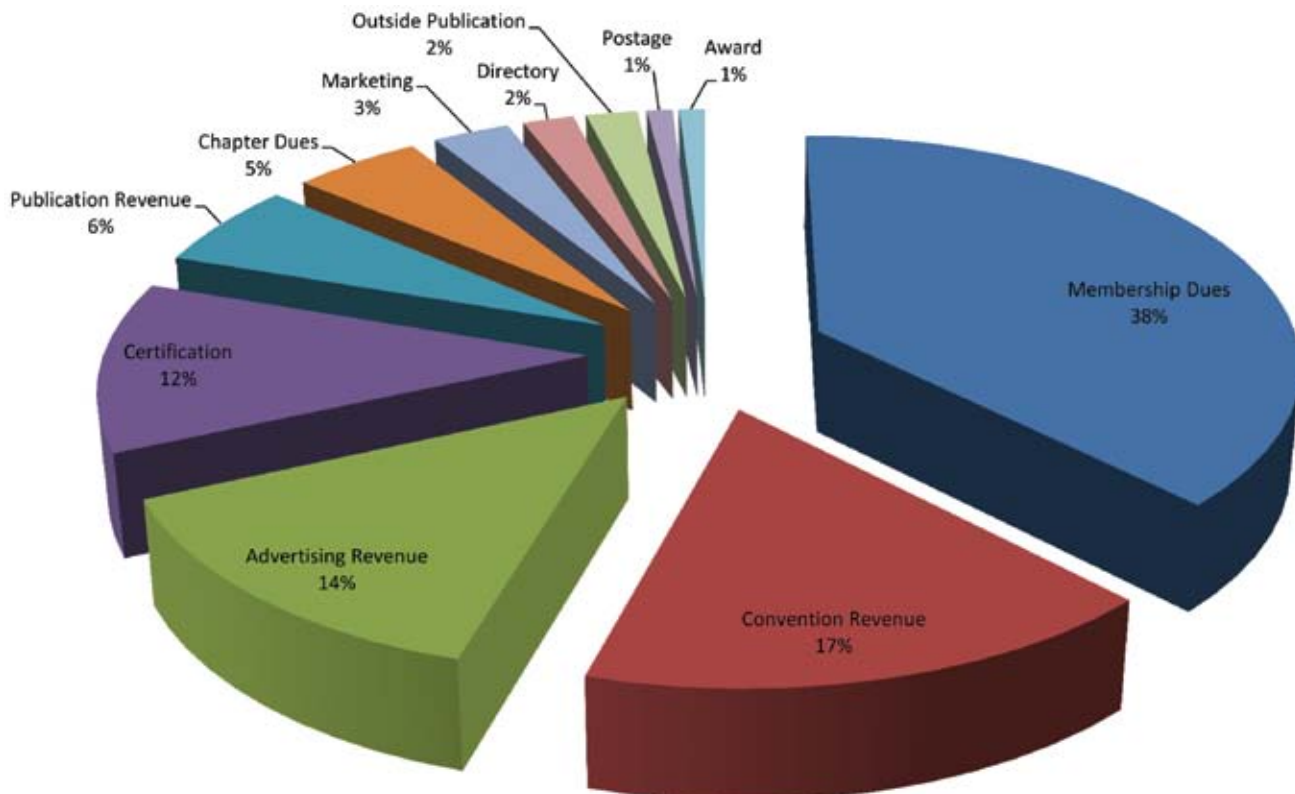
Beginning with the 2008-2009 report, ICRI has published an annual State of the Institute report in the *Concrete Repair Bulletin (CRB)*. This State of the Institute report is used as a measurement

tool by the Board of Directors and Executive Committee to enable them to review the success of ICRI's policies and programs. The following are some of the **2010-2011** highlights.

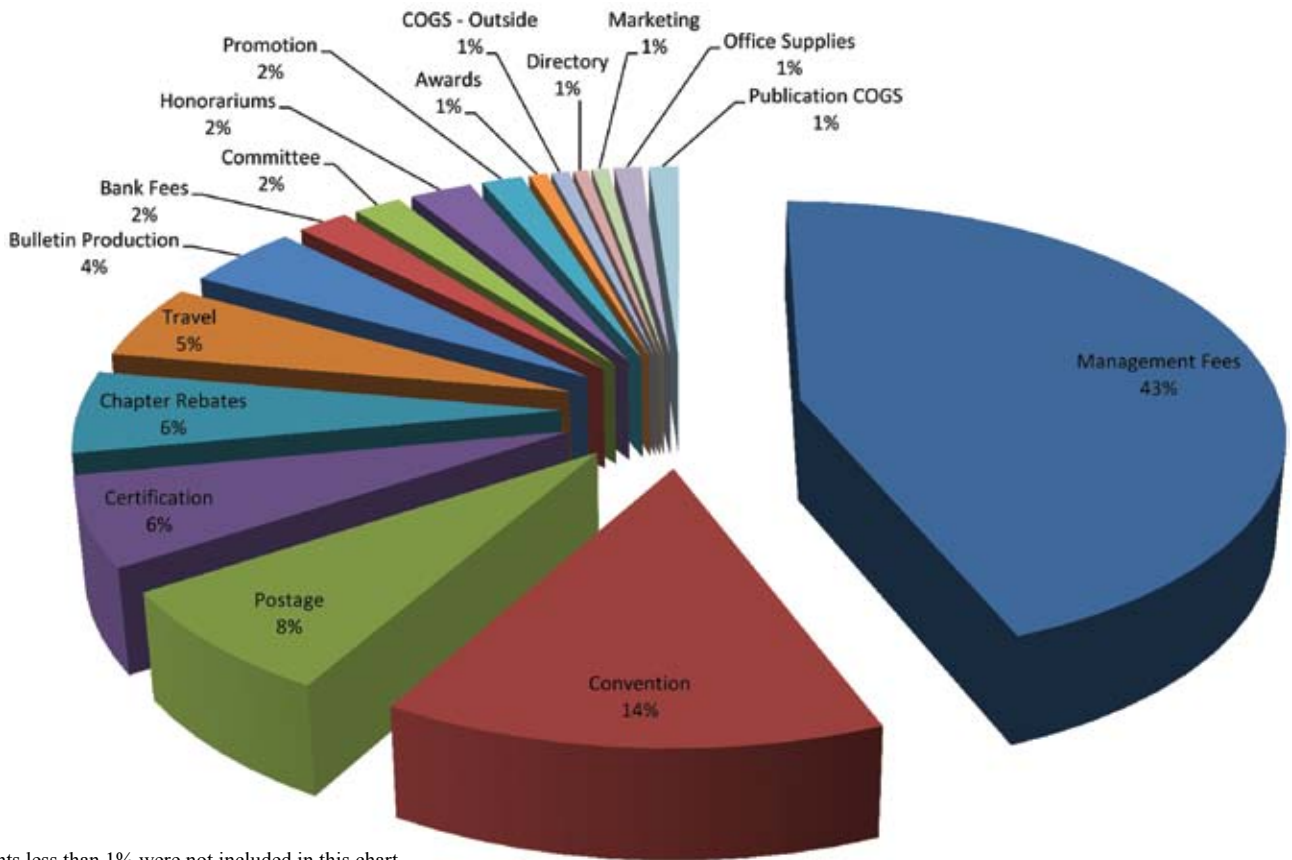
FINANCES

ICRI continues on the path of strong financial health. In 2010-2011 (ICRI's fiscal year runs April 1 to March 31), for the second year in a row, without a dues increase, and in spite of the struggling economy, ICRI had its healthiest year ever. The following charts show the distribution of funds. As you can see from the third chart, we have grown substantially over the last several years.

OPERATING REVENUES 2011

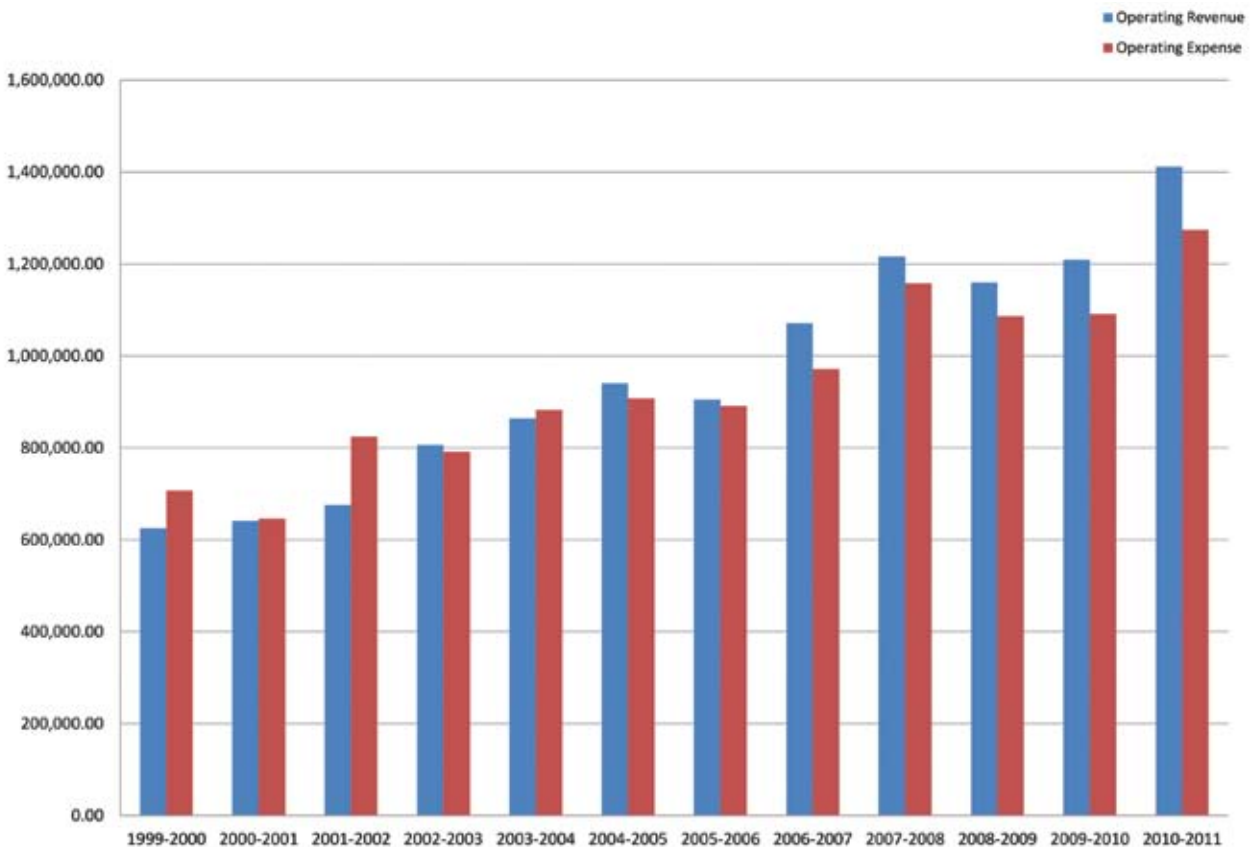


OPERATING EXPENSES 2011*



*Amounts less than 1% were not included in this chart

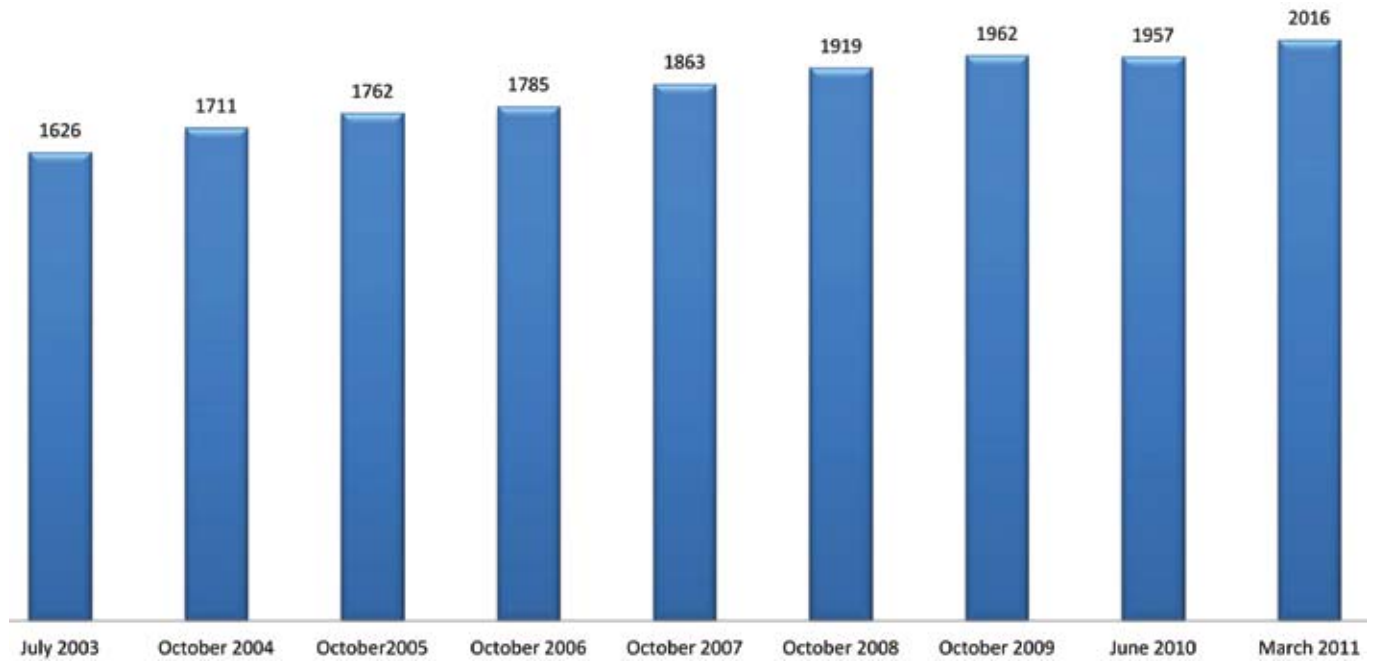
OPERATING REVENUE AND EXPENSE COMPARISON 2011



MEMBERSHIP

ICRI's membership numbers have continued to hold steady in this shaky economy. We currently have just over 2000 members, and ICRI's Marketing Committee is hard at work developing programs that will help increase these numbers.

MEMBERSHIP STATUS REPORT 2011



CHAPTERS

Our chapters continue to be a major part of ICRI's overall success. As you can see from the following table, the vast majority of our members belong to a chapter as well, and quite a few members actually belong to more than one chapter. In the fall of 2010, to help chapters develop great programs and great leaders, ICRI launched the Chapter Roundtable program. To date, we have held three roundtables, with the fourth scheduled for February 2012. We have had great participation from all of the chapters invited and very strong feedback on the importance of continuing this program.

CODE	CHAPTER	TOTAL MEMBERS 2011
AZ	ARIZONA	42
BWC	BALTIMORE-WASHINGTON	168
CAR	CAROLINAS	101
CFL	CENTRAL FLORIDA	27
TRI	CHICAGO	93
CT	CONNECTICUT	30
DV	DELAWARE VALLEY	75
FWC	FLORIDA WEST COAST	86
GA	GEORGIA	60
GP	GREAT PLAINS	52
GCC	GREATER CINCINNATI	28
GS	GULF SOUTH	17
HOU	HOUSTON	61
IND	INDIANA	26
I/I	IOWA/ILLINOIS	18
MNY	METRO NEW YORK	85
MI	MICHIGAN	40
MIN	MINNESOTA	45
NE	NEW ENGLAND	74
NTX	NORTHERN TEXAS	59
NCA	NORTHERN CALIFORNIA	57
NOH	NORTHERN OHIO	37
PNW	PACIFIC NORTHWEST	28
PIT	PITTSBURGH	38
PR	PUERTO RICO	20
QP	QUEBEC PROVINCE	60
RM	ROCKY MOUNTAIN	53
SFL	SOUTHEAST FLORIDA	67
SC	SOUTHERN CALIFORNIA	25
SWF	SOUTHWEST FLORIDA	26
UNY	UPSTATE NEW YORK	20
VA	VIRGINIA	46
WIS	WISCONSIN	21
TOTAL		1685

MEETINGS AND CONVENTIONS

Our meetings and conventions continue to play a vital role in the success of ICRI, as they are where members come together to network, learn, and perhaps, most importantly, where a great deal of volunteer effort helps produce the products and programs that drive ICRI. Again, we are pleased that attendance at ICRI conventions has been strong, even in this uncertain economy.

DATES	LOCATION	HOTEL	TOTAL ATTENDANCE	NONMEMBERS
3/16/11 - 3/18/11	HOUSTON, TX	THE WESTIN GALLERIA, HOUSTON	231	6
10/20/10 - 10/22/10	PITTSBURGH, PA	OMNI WILLIAM PENN HOTEL	245	—
4/14/10 - 4/16/10	MYRTLE BEACH, SC	MYRTLE BEACH RESORT & SPA AT GRANDE DUNES	212	4
10/21/09 - 10/23/09	TEMPE, AZ	THE BUTTES, A MARRIOTT RESORT	255	16
04/22/09 - 04/24/09	MINNEAPOLIS, MN	HILTON MINNEAPOLIS	204	8
10/29/08 - 10/31/08	ST. LOUIS, MO	MILLENNIUM HOTEL	285	16
4/16/08 - 4/18/08	DAYTONA, FL	THE SHORES RESORT & SPA DAYTONA	289	18
11/07/07 - 11/09/07	LAS VEGAS, NV	BALLY'S LAS VEGAS	246	11
4/19/07 - 4/20/07	ATLANTA, GA	SHERATON BUCKHEAD HOTEL	231	13
11/1/06 - 11/4/06	DENVER, CO	ADAMS MARK HOTEL	280	21
3/16/06 - 3/18/06	SAN DIEGO, CA	HYATT REGENCY ISLANDIA HOTEL & MARINA	162	11
11/2/05 - 11/5/05	KANSAS CITY, MO	KANSAS CITY MARRIOTT DOWNTOWN	178	8
3/2/05 - 3/5/05	BOSTON, MA	BOSTON PARK PLAZA	163	9
10/21/04 - 10/23/04	SAN FRANCISCO, CA	HILTON SAN FRANCISCO	209	—
4/1/04 - 4/3/04	CHICAGO, IL	INTER-CONTINENTAL CHICAGO	211	—
10/22/03 - 10/24/03	TAMPA, FL	TAMPA MARRIOTT WATERSIDE	278	—
3/27/03 - 3/29/03	VANCOUVER, BC, CANADA	THE FAIRMONT HOTEL VANCOUVER	182	—
10/24/02 - 10/26/02	PHOENIX, AZ	POINTE SOUTH MOUNTAIN RESORT	195	—
3/7/02 - 3/9/02	CHARLESTON, SC	CHARLESTON PREMIER RIVERVIEW	213	—
10/24/01 - 10/27/01	DALLAS, TX	HOTEL INTER-CONTINENTAL (GALLERIA)	146	—

Note: Creative Association Management obtained the contract for ICRI in June 2001. Prior event history is limited or nonexistent for this.

None of the success detailed herein would be possible without the incredible support ICRI receives from its members and chapters around the world. We thank you for this continued support and, hopefully, with the economy heading slightly up, look forward to an even better 2012!